



PSI  
3210 E Tropicana  
Las Vegas, NV 89121  
www.psiexams.com



## STATE OF NEW MEXICO

### CONTRACTOR EXAMINATIONS CANDIDATE INFORMATION BULLETIN

Examinations by PSI .....	1	Required Identification .....	3
Examination Scheduling Procedures .....	1	Security Procedures .....	3
Internet Scheduling .....	1	Taking the Examination by Computer .....	3
Fax Registration .....	1	Identification .....	3
Standard Mail Registration .....	1	Tutorial .....	4
Telephone Scheduling .....	1	Examination Question Example .....	4
Canceling an Examination .....	2	Examination Review .....	4
Missed Appointment or Late Cancellation .....	2	Scope Reporting .....	4
Special Examination Arrangements .....	2	Duplicate Score Reports .....	4
Emergency Examination Center Closing .....	2	Tips for Preparing for your License Examination .....	4
Examination Site Location .....	2	Examination Content Outlines .....	5
Reporting to the Examination Site .....	3		

Please refer to our website to check for the most updated information at [www.psiexams.com](http://www.psiexams.com)

## EXAMINATIONS BY PSI

This Candidate Information Bulletin provides you with information about the approval and examination process for contractor licensure in the State of New Mexico.

**CANDIDATES MUST BE PRE-APPROVED TO TAKE ANY EXAMINATION. If you have eligibility questions please call (877) 663-9267.**

Note: once you become eligible you must test within 6 months of the date of eligibility. If you do not test within 6 months you will need to reapply with the Division.

The Construction Industries Division of The New Mexico Regulation and Licensing Department (CID) has contracted with PSI to conduct its examination approval process and examination testing. PSI provides examinations through a network of computer examination centers in New Mexico and in many areas throughout the United States. PSI works closely with the State to be certain that examinations meet local as well as national requirements in basic principles and examination development standards.

## EXAMINATION SCHEDULING PROCEDURES

In order to schedule for an examination, you must be pre-approved.

Once you receive your approval, you will be responsible for contacting PSI to schedule an appointment to take an examination and make examination payment arrangements. The examination fee is valid for 1 year from the date PSI receives the fee.

You may only take the following examinations twice during the 6 month eligibility period.

NM Electrical Inspector (General)  
NM Residential Electrical Inspector  
NM General Building Inspector  
NM Mechanical Inspector  
NM Plumbing Inspector  
NM Residential Inspector

For all other examinations, you may not take the same examination more than twice within a 30-day period. If you have two fails within a 30-day period, you must wait 30 days from your 1<sup>st</sup> attempt, before you can test again.

Passing scores are valid for 1 year from the date of your examination.

Fees are listed on the registration form found at the end of this Candidate Information Bulletin.

### INTERNET REGISTRATION

For the fastest and most convenient test scheduling process, PSI recommends that candidates register for their examinations using the Internet. To register over the Internet, candidates will need to have a valid MasterCard or VISA.

Candidates register online by accessing PSI's registration website at [www.psiexams.com](http://www.psiexams.com). Internet registration is available 24 hours a day. To register by Internet, complete the steps below:

1. Complete the registration form on line and send it to PSI via the Internet.
2. Upon completion of the online registration form, you will be given the available examination dates and locations for scheduling your examination. Select your desired testing date.

### FAX REGISTRATION

For fax registration, you will need a valid VISA or MasterCard.

Complete the Examination Registration Form, including your credit card number and expiration date.

1. Fax the completed form to PSI (702) 932-2666. Fax registrations are accepted 24 hours a day.
2. Please allow 4 business days to process your registration. After 4 business days, you may call PSI to schedule the examination at (800) 733-9267.

### STANDARD MAIL REGISTRATION

1. Complete the Examination Registration Form found in this Candidate Information Bulletin. **BE SURE TO READ ALL DIRECTIONS CAREFULLY BEFORE COMPLETING THE EXAMINATION REGISTRATION FORM. IMPROPERLY COMPLETED FORMS WILL BE RETURNED TO YOU UNPROCESSED.**

Return the completed original form to PSI with the appropriate examination fee. Payment of fees can be made by VISA, MasterCard, money order, or cashier's check. Money orders or cashier's checks must be made payable to PSI. Print your social security number on your check or money order to ensure that your fees are properly assigned. **CASH, COMPANY CHECKS, AND PERSONAL CHECKS ARE NOT ACCEPTED.**

2. Please allow 7 business days to process your registration before scheduling your examination at (800) 733-9267.

### TELEPHONE REGISTRATION

For telephone registration, you will need a valid VISA or MasterCard.

Complete the Examination Registration Form, including your credit card number and expiration date, so that you will be prepared with all of the information needed to register by telephone.

Call (800) 733-9267, 24 hours a day and register using the Automated Registration System. Otherwise, PSI registrars are available Monday through Friday, between 6:00 am and 6:00 pm and Saturday, between 9:00 am and 3:00 pm, Central Time, to receive the information listed on your Examination Registration Form and schedule your appointment for the examination.



PSI will make every effort to schedule the examination site and time that is most convenient for you. If space is available in the examination site of your choice, you may schedule an examination 1 day prior to the examination date of your choice, up to 6:00 pm. Please be prepared to accept alternate examination appointment choices.

### CANCELING AN EXAMINATION APPOINTMENT

You may cancel and reschedule an examination appointment without forfeiting your fee if your *cancellation notice is received 2 days before the scheduled examination date*. For example, for a Monday appointment, the cancellation notice would need to be received on the previous Saturday. You may call PSI at (800) 733-9267. Please note that you may also use the automated system, using a touch-tone phone, 24 hours a day in order to cancel and reschedule your appointment.

**Note:** A voicemail message is not an acceptable form of cancellation. Please use the Internet, automated telephone system, or call PSI and speak to a Customer Service Representative.

### MISSED APPOINTMENT OR LATE CANCELLATION

Your registration will be invalid, you will not be able to take the examination as scheduled, and you will forfeit your examination fee, if you:

- Do not cancel your appointment at least 2 days before the scheduled examination date;
- Do not appear for your examination appointment;
- Arrive after examination start time; or
- Do not present proper identification when you arrive for the examination.

### SPECIAL EXAMINATION ARRANGEMENTS

All examination centers are equipped to provide access in accordance with the Americans with Disabilities Act (ADA) of 1990, and every reasonable accommodation will be made in meeting a candidate's needs. Applicants with disabilities or those who would otherwise have difficulty taking the examination must fill out the form at the end of this Candidate Information Bulletin and fax to PSI (702) 932-2666. This form also includes out-of-state testing requests.

### EXAMINATION SITE CLOSING FOR AN EMERGENCY

In the event that severe weather or another emergency forces the closure of an examination site on a scheduled examination date, your examination will be rescheduled. PSI personnel will attempt to contact you in this situation. However, you may check the status of your examination schedule by calling (800) 733-9267. Every effort will be made to reschedule your examination at a convenient time as soon as possible.

## EXAMINATION SITE LOCATION

The New Mexico examinations are administered at the PSI examination centers in New Mexico as listed below:

The New Mexico examinations are administered at the PSI examination centers in New Mexico as listed below:

### **Albuquerque**

2301 Yale Blvd, SE  
Building C, Suite 4  
Albuquerque, NM 87106

*From Interstate 25, take the Gibson Blvd exit and travel East on Gibson Blvd until you reach Yale Blvd Southeast. Turn right on Yale Blvd S.E. (heading South), just past Renard Place and then turn right into the Commerce Center. The site is across the street from the Waffle House and Comfort Inn.*

### **Farmington**

1307 E. 20th St.  
Farmington, NM 87401

*Fr From E Main St, turn right on Sullivan and turn left on 20<sup>th</sup> St.*

### **Las Cruces**

1001 N. Solano, Suite # D  
Las Cruces, NM 88001

*Take Highway 70 West to Solano. Turn South on Solano and go one block past Spruce to Pinon. The test center is on the Northwest corner of Solano and Pinon.*

### **Roswell**

105 E. Fifth St.  
Roswell, NM 88201

*From US-285 S / US-70 W, turn LEFT onto E 5TH ST.*

### **Santa Fe**

4001 Office Court Drive, Suite 301  
Santa Fe, NM 87507

*From Albuquerque International Sunport Airport: Head East on Sunport Blvd SE. Merge onto I-25 N via the ramp to I-40/Downtown and Santa Fe. Take exit 278 and merge onto Cerrillos Road/NM-14 N. Approximately 2.5 miles north on Cerrillos Road, turn right on Wagon Road. Turn right on Office Court Drive into the office park.*

*From Espanola, NM and North Cities: Head Southeast on East Paseo De Onate/US-285S/US-84S (toward Calle Espinosa). Continue on Sandia Drive. Slight right at South Riverside Drive/US-285S/US-84S. Turn right on Cerrillos Road. Approximately 5 miles on Cerrillos Road, turn left on Wagon Road. Turn right on Office Court Drive into the office park.*

### **Colorado Examination Site**

*The following site will offer the New Mexico examinations.*

### **Durango**

799 East 3rd Street, Suite 3  
Durango, CO 81301

*From Hwy 550: Turn East on College Drive. Go straight then turn right on East 8th Avenue. Follow until East 3rd Street. PSI Testing Site is on the right in Suite 3.*

### **Texas Examination Sites**

*The following sites will offer the New Mexico examinations.*

### **Amarillo**

1616 S. Kentucky, Building C, Suite C220  
Amarillo, TX 79101

*From I-40 take Georgia exit. Examination center is located North of I-40. Go to 16<sup>th</sup> Street (2<sup>nd</sup> traffic light) and turn left. Go one block to Kentucky and turn left into the Wellington Office Park located at 1616 S. Kentucky on the right side of the street. Go to Building C, second floor.*

### **El Paso**

The Atrium



1155 Westmoreland, Suite 110  
 El Paso, TX 79925  
*From I-10 W, take the Airways exit North. Turn right at the first light (Viscount). Turn right on Westmoreland Dr.*

**Lubbock**  
 The Center  
 4413 82nd St., Suite 210  
 Lubbock, TX 79424  
*From S Loop 289, take the Quaker Ave exit and go South. Turn right on 82nd St.*

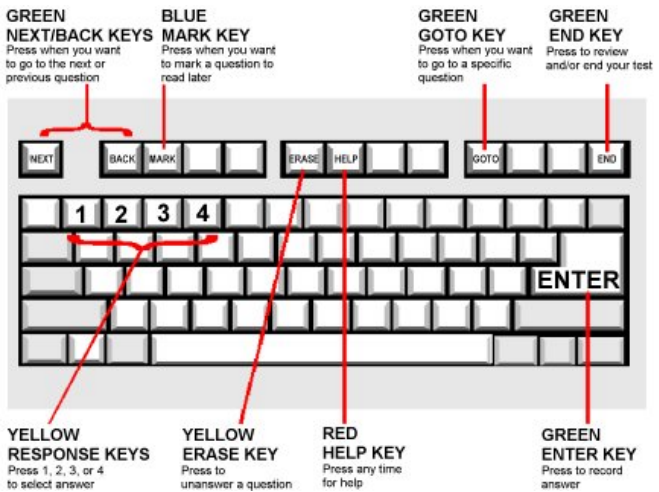
**Midland**  
 Westwood Village Shopping Center  
 4200 West Illinois Avenue, Suite 200  
 Midland, TX 79703  
*From I-20, take Midkiff Road exit. Go North on Midkiff Road. Take a left on Illinois Ave. Go .8 miles and turn right into Chinese Kitchen's parking lot at 4200 W Illinois. Suite is at the end of the left Strip.  
 From Business 20 (Old Hwy 80) going West, follow Front Street until Wall St Traffic light. Go 2 blocks and turn right on Midkiff. Turn left on Illinois. Go .8 miles and turn right into Chinese Kitchen's parking lot at 4200 W Illinois. Suite is at the end of the left Strip.  
 From North Hwy 349, Look for Loop 250 West (just before overpass). Turn right at Loop and go 2 miles to Exit Midkiff. Turn left at traffic light. Turn right at Illinois traffic signal. Turn right onto Chinese Kitchen's parking Lot at 4200 W Illinois. Suite is at the end of the left Strip.*

Additionally, PSI has examination centers in many other regions across the United States. You may take this examination at any of these locations by calling (800) 733-9267. You will need to speak with a Customer Service Rep to schedule outside of New Mexico and Texas.

- NO conversing or any other form of communication among candidates is permitted once you enter the examination area.
- Cell phones, pagers, recording devices, and children are not allowed in the examination center. **NO personal items are to enter the testing center.** PSI will not be responsible for any personal items and suggests that you leave them locked in the trunk of your car.
- Only non-programmable calculators that are silent, battery-operated, do not have paper tape printing capabilities, and do not have a keyboard containing the alphabet will be allowed in the examination site.
- No smoking, eating, or drinking will be allowed at the examination site.
- You may not exit the building during the examination.
- Copying or communicating examination content is a violation of PSI security policy and the State Law. Either one may result in the disqualification of examination results and may lead to legal action.

## TAKING THE EXAMINATION BY COMPUTER

Taking the PSI written examination by computer is simple. You do not need any computer experience or typing skills. You will use fewer keys than you use on a touch-tone telephone. All response keys are colored and have prominent characters. An illustration of the special keyboard is shown here. You may also use a mouse.



### REPORTING TO THE EXAMINATION SITE

On the day of the examination, you should arrive at least 30 minutes before your appointment. This extra time is for sign-in, identification, and familiarizing you with the examination process. *If you arrive late, you may not be admitted to the examination site and you will forfeit your examination registration fee.*

#### REQUIRED IDENTIFICATION AT EXAMINATION SITE

*You must provide 2 forms of identification.* One must be a VALID form of government issued identification (driver's license, state ID, passport, military ID), which bears your signature and has your photograph. The second ID must have your signature and preprinted legal name. All identification provided must match the name on the Eligibility Letter.

If you cannot provide the required identification, you must call (800) 733-9267 at least 3 weeks prior to your scheduled appointment to arrange a way to meet this security requirement. *Failure to provide all of the required identification at the time of the examination without notifying PSI is considered a missed appointment, and you will not be able to take the examination.*

#### SECURITY PROCEDURES

The following security procedures will apply during the examination:

#### IDENTIFICATION SCREEN

You will be directed to a semiprivate testing station to take the examination. When you are seated at the testing station, you will be prompted to confirm your name, identification number, and the examination for which you are registered.



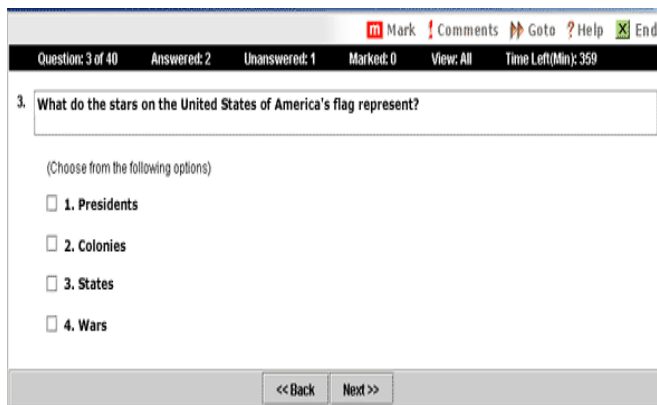
## TUTORIAL

Before you start your examination, an introductory tutorial to the computer and keyboard is provided on the computer screen. The time you spend on this tutorial, up to 15 minutes, DOES NOT count as part of your examination time. Sample questions are included following the tutorial so that you may practice using the keys, answering questions, and reviewing your answers.

One question appears on the screen at a time. During the examination, minutes remaining will be displayed at the top of the screen and updated as you record your answers.

### EXAMINATION QUESTION EXAMPLE

During the examination, you should press 1, 2, 3, or 4 to select your answer or press "MARK" to mark it for later review. You should then press "ENTER" to record your answer and move on to the next question. A sample question display follows:



**IMPORTANT:** After you have entered your responses, you will later be able to return to any question(s) and change your response, provided the examination time has not run out.

### PRETEST ITEMS

In addition to the number of questions per examination, a small number of five to ten "pretest" questions may be administered to candidates during the examinations. These questions will not be scored and the time taken to answer them will not count against examination time. The administration of such non-scored experimental questions is an essential step in developing future licensing examinations.

### EXAMINATION REVIEW

PSI, in cooperation with the New Mexico Regulation and Licensing Department, will be consistently evaluating the examinations being administered to ensure that the examinations accurately measure competency in the required knowledge areas. Comments may be entered on the computer keyboard during the examination. Your comments regarding the questions and the examinations are welcomed. Comments will be analyzed by PSI examination development staff. While PSI does not respond to individuals regarding these comments, all substantive comments are reviewed. If an error affecting examination scores is discovered as a result, which occurs very rarely, the examination scores of all affected candidates will

be automatically adjusted. This is the only review of examination materials available to applicants.

## SCORE REPORTING

Your score will be given to you immediately following completion of the examination. The following summary describes the score reporting process:

- **On screen** - your score will appear immediately on the computer screen. This will happen automatically at the end of the time allowed for the examination;
  - If you **pass**, you will immediately receive a successful notification.
  - If you **do not pass**, you will receive a diagnostic report indicating your strengths and weaknesses by examination type with the score report.
- **On paper** - an unofficial score report will be printed at the examination site.

### DUPLICATE SCORE REPORTS

You can write to PSI to request a duplicate of your score report for up to 1 year after your examination

## TIPS FOR PREPARING FOR YOUR LICENSE EXAMINATION

The following suggestions will help you prepare for your examination.

- Planned preparation increases your likelihood of passing.
- Start with a current copy of this Candidate Information Bulletin and use the examination content outline as the basis of your study.
- Read study materials that cover all the topics in the content outline.
- Take notes on what you study. Putting information in writing helps you commit it to memory and it is also an excellent business practice. Discuss new terms or concepts as frequently as you can with colleagues. This will test your understanding and reinforce ideas.
- Your studies will be most effective if you study frequently, for periods of about 45 to 60 minutes. Concentration tends to wander when you study for longer periods of time.

## EXAMINATION REFERENCE MATERIAL AND CONTENT OUTLINE

If a test question answer could differ because of conflicting information in test reference sources, a legal requirement such as code, law, or regulation overrides any other reference. If two legal requirements appear to conflict, the state-specific code, law, or regulation overrides the national one. Information from sources on the test reference list override information from other sources or persons.

Many of the reference materials listed are available for purchase at [www.psonlinestore.com](http://www.psonlinestore.com) or by calling the PSI Online Store, toll-free, at (866) 589-3088.



Titles currently in stock are listed on the order form near the end of this candidate information bulletin.

Contractor only: In addition to the trade-specific examination(s) you must either pass the Business and Law offered by PSI or take an "approved" Business and Law Course. Please see the list of schools that offer an approved course at [www.psiexams.com](http://www.psiexams.com). The State of New Mexico or PSI does NOT sponsor these schools.

You must pass the Business and Law examination and the Trade examination within 1 year. For example, if you pass the Trade examination and fail the Business and Law examination, you must retake and pass the Business and Law examination within 1 year of the pass date on the Trade examination.

### Business and Law Examination

# of Questions	% Required to Pass	Time Allowed
50	75% (38 points)	125 Minutes

#### CONTENT OUTLINE

Subject Area	# of Items
Licensing Requirements	8
Estimating and Bidding	5
Business Organization and Financial Management	8
Tax Laws	5
Labor Laws	4
Project Management and Lien Law	4
Contracts	8
Risk Management	4
Environmental and Safety	3

#### REFERENCE LIST

The reference materials listed below were used to prepare the questions for this examination. The examination may also contain questions based on trade knowledge or general industry practices. **Except for Code books**, you can base your answers on later editions of references as they become available. For Code questions, the examinations will be based **only** on the edition of the Code book that is listed.

Candidates may use a silent, non-printing, non-programmable calculator in the examination center. Candidates will also be provided with a magnifying glass upon request.

This examination is OPEN BOOK.

*The following reference materials are allowed in the examination center:*

- *Contractor's Guide to Business, Law, and Project Management - Basic Edition*, 8th Edition, National Association of State Contractors Licensing Agencies (NASCLA), (623) 587-9519, Fax (623) 587-9625, ISBN 1-889834-72-6

- *New Mexico Construction Industries Licensing Act (NMSA Chapter 60, Article 13)*, 2006, Conway Greene Co., (216) 619-8091, [www.conwaygreene.com/NewMexico.htm](http://www.conwaygreene.com/NewMexico.htm)
- *New Mexico Contractor's License Requirement (NMAC Title 14, Chapter 6, Part 3)*, 2006, New Mexico Commission of Public Records, (505) 476-7900, [www.nmcpr.state.nm.us/NMAC](http://www.nmcpr.state.nm.us/NMAC)

### Electrical Inspector (General)

# of Questions	% Required to Pass	Time Allowed
80	75% (60 points)	210 Minutes

#### CONTENT OUTLINE

Subject Area	# of Items
General Knowledge and Electrical Installation Requirements	8
Services, Feeders, and Branch Circuits	10
Overcurrent Protection	6
Grounding and Bonding	9
Conductors and Cables	8
Raceways and Boxes	7
Hazardous Locations, Special Occupancies, and Special Equipment	8
Lighting, Signs, and General-Use Equipment	6
Motors, Transformers, and Generators	6
New Mexico State Code	6
Low Voltage	6

#### REFERENCE LIST

The reference material listed below was used to prepare the questions for this examination. The examination may also contain questions based on trade knowledge or general industry practices. **Except for Code books**, you can base your answers on later editions of references as they become available. For Code questions, the examinations will be based **only** on the edition of the Code book that is listed.

Candidates may use a silent, non-printing, non-programmable calculator in the examination center. Candidates will also be provided with a magnifying glass upon request.

This examination is OPEN BOOK.

*The following reference materials are allowed in the examination center:*

- *NFPA 70 - National Electrical Code, 2008*, or *The National Electrical Code Handbook*, National Fire Protection Association (NFPA), (800) 344-3555, [www.nfpa.org](http://www.nfpa.org)
- *New Mexico Electrical Code (NMAC 14.10.4)*, 2008, [www.nmcpr.state.nm.us/NMAC](http://www.nmcpr.state.nm.us/NMAC), (505) 476-4700

Candidates are responsible for bringing their own references to the examination center. Reference materials must be bound, and may be highlighted, underlined, annotated, and/or indexed prior to the examination session. However, references may not be written in during the examination session. Any candidate caught writing in the references during the examination will



have the references confiscated and will be reported to the department. Furthermore, candidates are not permitted to bring in any additional papers (loose or attached) with their approved references. Any additional materials will be removed from the references and confiscated. References may be tabbed/indexed with permanent tabs only. Temporary tabs, such as Post-It notes, are not allowed and must be removed from the reference before the examination begins.

### General Building Inspector

# of Questions	% Required to Pass	Time Allowed
50	75% (38 points)	150 Minutes

#### CONTENT OUTLINE

Subject Area	# of Items
Sitework, Footings, and Foundations	10
Concrete and Concrete Reinforcement	4
Masonry	4
Carpentry	12
Metals	4
Roofing	8
Associated Trades	4
General Code	4

#### REFERENCE LIST

The reference materials listed below were used to prepare the questions for this examination. The examination may also contain questions based on trade knowledge or general industry practices. **Except for Code books**, you can base your answers on later editions of references as they become available. For Code questions, the examinations will be based **only** on the edition of the Code book that is listed.

Candidates may use a silent, non-printing, non-programmable calculator in the examination center. Candidates will also be provided with a magnifying glass upon request.

This examination is OPEN BOOK.

*The following reference materials are allowed in the examination center:*

- *New Mexico Residential Building Code* (NMAC 14.7.3), 2006, [www.nmcpr.state.nm.us/NMAC](http://www.nmcpr.state.nm.us/NMAC), (505) 476-4700
- *New Mexico Commercial Building Code* (NMAC 14.7.2), 2006, [www.nmcpr.state.nm.us/NMAC](http://www.nmcpr.state.nm.us/NMAC), (505) 476-4700
- *International Building Code*, 2006, International Code Council, (800) 786-4452, [www.iccsafe.org](http://www.iccsafe.org).  
Beginning July 1, 2010 test questions are to be answered based on either the 2006 or the 2009 editions of the code; beginning January 1, 2011 test questions are to be answered based only on the 2009 edition of the code.
- *International Residential Code for One- and Two-Family Dwellings*, 2006, International Code Council, (800) 786-4452, [www.iccsafe.org](http://www.iccsafe.org) (800) 786-4452, [www.iccsafe.org](http://www.iccsafe.org)  
Beginning July 1, 2010 test questions are to be answered based on either the 2006 or the 2009 editions of the code; beginning January 1, 2011 test questions are to be answered based only on the 2009 edition of the code.

Candidates are responsible for bringing their own references to the examination center. Reference materials must be bound, and may be highlighted, underlined, annotated, and/or indexed prior to the examination session. However, references may not be written in during the examination session. Any candidate caught writing in the references during the examination will have the references confiscated and will be reported to the department. Furthermore, candidates are not permitted to bring in any additional papers (loose or attached) with their approved references. Any additional materials will be removed from the references and confiscated. References may be tabbed/indexed with permanent tabs only. Temporary tabs, such as Post-It notes, are not allowed and must be removed from the reference before the examination begins.

### Mechanical Inspector

# of Questions	% Required to Pass	Time Allowed
50	75% (38 points)	120 Minutes

#### CONTENT OUTLINE

Subject Area	# of Items
General Knowledge	6
Piping - Refrigeration, Gas, Hydronic	10
Gas Sizing	2
Controls and Testing	4
Appliances - Heating and Cooling	10
Combustion Air	5
Chimneys, Flues and Vents	7
Ducts	6

#### REFERENCE LIST

The reference material listed below was used to prepare the questions for this examination. The examination may also contain questions based on trade knowledge or general industry practices. **Except for Code books**, you can base your answers on later editions of references as they become available. For Code questions, the examinations will be based **only** on the edition of the Code book that is listed.

Candidates may use a silent, non-printing, non-programmable calculator in the examination center. Candidates will also be provided with a magnifying glass upon request.

This examination is OPEN BOOK.

*The following reference materials are allowed in the examination center:*

- *New Mexico Mechanical Code* (NMAC 14.9.2), 2006, [www.nmcpr.state.nm.us/NMAC](http://www.nmcpr.state.nm.us/NMAC), (505) 476-4700
- *Uniform Mechanical Code*, 2006, International Association of Plumbing and Mechanical Officials (IAPMO), (800) 854-2766, [www.iapmo.org](http://www.iapmo.org)
- *New Mexico Plumbing Code* (NMAC 14.8.2), 2006, [www.nmcpr.state.nm.us/NMAC](http://www.nmcpr.state.nm.us/NMAC), (505) 476-4700
- *Uniform Plumbing Code*, 2006, International Association of Plumbing and Mechanical Officials (IAPMO), (800) 854-2766, [www.iapmo.org](http://www.iapmo.org)



Candidates are responsible for bringing their own references to the examination center. Reference materials must be bound, and may be highlighted, underlined, annotated, and/or indexed prior to the examination session. However, references may not be written in during the examination session. Any candidate caught writing in the references during the examination will have the references confiscated and will be reported to the department. Furthermore, candidates are not permitted to bring in any additional papers (loose or attached) with their approved references. Any additional materials will be removed from the references and confiscated. References may be tabbed/indexed with permanent tabs only. Temporary tabs, such as Post-It notes, are not allowed and must be removed from the reference before the examination begins.

- *New Mexico Mechanical Code* (NMAC 14.9.2), 2006, [www.nmcpr.state.nm.us/NMAC](http://www.nmcpr.state.nm.us/NMAC), (505) 476-4700

Candidates are responsible for bringing their own references to the examination center. Reference materials must be bound, and may be highlighted, underlined, annotated, and/or indexed prior to the examination session. However, references may not be written in during the examination session. Any candidate caught writing in the references during the examination will have the references confiscated and will be reported to the department. Furthermore, candidates are not permitted to bring in any additional papers (loose or attached) with their approved references. Any additional materials will be removed from the references and confiscated. References may be tabbed/indexed with permanent tabs only. Temporary tabs, such as Post-It notes, are not allowed and must be removed from the reference before the examination begins.

## Plumbing Inspector

# of Questions	% Required to Pass	Time Allowed
75	75% (57 points)	190 Minutes

### CONTENT OUTLINE

Subject Area	# of Items
Drainage Waste and Vents	20
Water Supply Systems	10
Backflow Prevention	8
Storm Drainage Systems	5
Plumbing Fixtures, Including Water Heaters	9
General Regulations	12
Interceptors and Traps	6
Septic and Sewer	5

### REFERENCE LIST

The reference materials listed below were used to prepare the questions for this examination. The examination may also contain questions based on trade knowledge or general industry practices. **Except for Code books**, you can base your answers on later editions of references as they become available. For Code questions, the examinations will be based **only** on the edition of the Code book that is listed.

Candidates may use a silent, non-printing, non-programmable calculator in the examination center. Candidates will also be provided with a magnifying glass upon request.

This examination is OPEN BOOK.

*The following reference materials are allowed in the examination center:*

- *New Mexico Plumbing Code* (NMAC 14.8.2), 2006, [www.nmcpr.state.nm.us/NMAC](http://www.nmcpr.state.nm.us/NMAC), (505) 476-4700
- *Uniform Plumbing Code*, 2006, International Association of Plumbing and Mechanical Officials (IAPMO), (800) 854-2766, [www.iapmo.org](http://www.iapmo.org)
- *NFPA 54 - National Fuel Gas Code*, 2006, National Fire Protection Association (NFPA), (800) 344-3555, [www.nfpa.org](http://www.nfpa.org)
- *New Mexico Liquid Waste Disposal Regulations* (NMAC 20.7.3), 2005, [www.nmcpr.state.nm.us/NMAC](http://www.nmcpr.state.nm.us/NMAC), (505) 476-4700

## Residential Electrical Inspector

# of Questions	% Required to Pass	Time Allowed
50	75% (38 points)	120 Minutes

### CONTENT OUTLINE

Subject Area	# of Items
General Knowledge and Electrical Installation Requirements	7
Services, Feeders, and Branch Circuits	10
Overcurrent Protection	4
Grounding and Bonding	6
Conductors and Cables	7
Raceways and Boxes	5
Special Occupancies and Special Equipment, including Pools	2
Lighting and General-Use Equipment	2
New Mexico State Code	5
Low Voltage	2

### REFERENCE LIST

The reference material listed below was used to prepare the questions for this examination. The examination may also contain questions based on trade knowledge or general industry practices. **Except for Code books**, you can base your answers on later editions of references as they become available. For Code questions, the examinations will be based **only** on the edition of the Code book that is listed.

Candidates may use a silent, non-printing, non-programmable calculator in the examination center. Candidates will also be provided with a magnifying glass upon request.

This examination is OPEN BOOK.

*The following reference materials are allowed in the examination center:*

- *NFPA 70 - National Electrical Code, 2008, or The National Electrical Code Handbook*, National Fire Protection Association (NFPA), (800) 344-3555, [www.nfpa.org](http://www.nfpa.org)





- *New Mexico Electrical Code* (NMAC 14.10.4), 2008, [www.nmcpr.state.nm.us/NMAC](http://www.nmcpr.state.nm.us/NMAC), (505) 476-4700

January 1, 2011 test questions are to be answered based only on the 2009 edition of the code.

Candidates are responsible for bringing their own references to the examination center. Reference materials must be bound, and may be highlighted, underlined, **annotated**, and/or indexed prior to the examination session. However, references may not be written in during the examination session. Any candidate caught writing in the references during the examination will have the references confiscated and will be reported to the department. Furthermore, candidates are not permitted to bring in any additional papers (loose or attached) with their approved references. Any additional materials will be removed from the references and confiscated. References may be tabbed/indexed with permanent tabs only. Temporary tabs, such as Post-It notes, are not allowed and must be removed from the reference before the examination begins.

Candidates are responsible for bringing their own references to the examination center. Reference materials must be bound, and may be highlighted, underlined, **annotated**, and/or indexed prior to the examination session. However, references may not be written in during the examination session. Any candidate caught writing in the references during the examination will have the references confiscated and will be reported to the department. Furthermore, candidates are not permitted to bring in any additional papers (loose or attached) with their approved references. Any additional materials will be removed from the references and confiscated. References may be tabbed/indexed with permanent tabs only. Temporary tabs, such as Post-It notes, are not allowed and must be removed from the reference before the examination begins.

### Residential Inspector

# of Questions	% Required to Pass	Time Allowed
40	75% (30 points)	100 Minutes

#### CONTENT OUTLINE

Subject Area	# of Items
Sitework, Footings, and Foundations	4
Concrete and Concrete Reinforcement	5
Masonry	5
Carpentry	8
Roofing	15
General Code	3

#### REFERENCE LIST

The reference materials listed below were used to prepare the questions for this examination. The examination may also contain questions based on trade knowledge or general industry practices. **Except for Code books**, you can base your answers on later editions of references as they become available. For Code questions, the examinations will be based **only** on the edition of the Code book that is listed.

Candidates may use a silent, non-printing, non-programmable calculator in the examination center. Candidates will also be provided with a magnifying glass upon request.

This examination is OPEN BOOK.

*The following reference materials are allowed in the examination center:*

- New Mexico Administrative Code Title 14, 2004
- *New Mexico Residential Building Code* (NMAC 14.7.3), 2006, [www.nmcpr.state.nm.us/NMAC](http://www.nmcpr.state.nm.us/NMAC), (505) 476-4700
- *New Mexico Commercial Building Code* (NMAC 14.7.2), 2006, [www.nmcpr.state.nm.us/NMAC](http://www.nmcpr.state.nm.us/NMAC), (505) 476-4700
- *International Residential Code for One- and Two-Family Dwellings*, 2006, International Code Council, (800) 786-4452, [www.iccsafe.org](http://www.iccsafe.org) (800) 786-4452, [www.iccsafe.org](http://www.iccsafe.org) Beginning July 1, 2010 test questions are to be answered based on either the 2006 or the 2009 editions of the code; beginning

### EE-98 Residential and Commercial Electrical Part 1 (Commercial and Industrial)

# of Questions	% Required to Pass	Time Allowed
80	75% (60 points)	180 Minutes

#### CONTENT OUTLINE

Subject Area	# of Items
General Knowledge and Electrical Installation Requirements	13
Services, Feeders, and Branch Circuits	10
Overcurrent Protection	5
Grounding and Bonding	10
Conductors and Cables	8
Raceways and Boxes	8
Hazardous Locations, Special Occupancies, and Special Equipment	10
Lighting, Signs, and General-Use Equipment	6
Motors, Transformers, and Generators	6
New Mexico State Code	4

#### REFERENCE LIST

The reference materials listed below were used to prepare the questions for this examination. The examination may also contain questions based on trade knowledge or general industry practices. **Except for Code books**, you can base your answers on later editions of references as they become available. For Code questions, the examinations will be based **only** on the edition of the Code book that is listed.

Candidates may use a silent, non-printing, non-programmable calculator in the examination center. Candidates will also be provided with a magnifying glass upon request.

This examination is OPEN BOOK.

*The following reference materials are allowed in the examination center:*

- *NFPA 70 - National Electrical Code, 2008, or The National Electrical Code Handbook*, National Fire Protection Association (NFPA), (800) 344-3555, [www.nfpa.org](http://www.nfpa.org)



- *New Mexico Electrical Code* (NMAC 14.10.4), 2008, www.nmcpr.state.nm.us/NMAC, (505) 476-4700

The following reference materials are not allowed in the examination center:

- *American Electricians' Handbook*, 15th Edition, McGraw-Hill, (800) 262-4729, www.books.mcgraw-hill.com, ISBN: 0-07-137735
- *Ugly's Electrical References*, George V. Hart, 2008, Burleson Distributing Corp., (800) 531-1660, www.uglyselectrical.com, ISBN 0-9623229-7-0\

Candidates are responsible for bringing their own references to the examination center. Reference materials must be bound, and may be highlighted, underlined, **annotated**, and/or indexed prior to the examination session. However, references may not be written in during the examination session. Any candidate caught writing in the references during the examination will have the references confiscated and will be reported to the department. Furthermore, candidates are not permitted to bring in any additional papers (loose or attached) with their approved references. Any additional materials will be removed from the references and confiscated. References may be tabbed/indexed with permanent tabs only. Temporary tabs, such as Post-It notes, are not allowed and must be removed from the reference before the examination begins.

### EE-98 Residential and Commercial Electrical Part 2 (Residential)

# of Questions	% Required to Pass	Time Allowed
40	75% (30 points)	90 Minutes

#### CONTENT OUTLINE

Subject Area	# of Items
General Knowledge and Electrical Installation Requirements	7
Services, Feeders, and Branch Circuits	8
Overcurrent Protection	3
Grounding and Bonding	4
Conductors and Cables	4
Raceways and Boxes	4
Special Occupancies and Special Equipment, including Pools	3
Lighting and General-Use Equipment	3
New Mexico State Code	4

#### REFERENCE LIST

The reference materials listed below were used to prepare the questions for this examination. The examination may also contain questions based on trade knowledge or general industry practices. **Except for Code books**, you can base your answers on later editions of references as they become available. For Code questions, the examinations will be based **only** on the edition of the Code book that is listed. Candidates may use a silent, non-printing, non-programmable calculator in the examination center. Candidates will also be provided with a magnifying glass upon request.

This examination is OPEN BOOK.

The following reference materials are allowed in the examination center:

- *NFPA 70 - National Electrical Code, 2008, or The National Electrical Code Handbook*, National Fire Protection Association (NFPA), (800) 344-3555, www.nfpa.org
- *New Mexico Electrical Code* (NMAC 14.10.4), 2008, www.nmcpr.state.nm.us/NMAC, (505) 476-4700

The following reference materials are not allowed in the examination center:

- *American Electricians' Handbook*, 15th Edition, McGraw-Hill, (800) 262-4729, www.books.mcgraw-hill.com, ISBN: 0-07-137735
- *Ugly's Electrical References*, George V. Hart, 2008, Burleson Distributing Corp., (800) 531-1660, www.uglyselectrical.com, ISBN 0-9623229-7-0

Candidates are responsible for bringing their own references to the examination center. Reference materials must be bound, and may be highlighted, underlined, **annotated**, and/or indexed prior to the examination session. However, references may not be written in during the examination session. Any candidate caught writing in the references during the examination will have the references confiscated and will be reported to the department. Furthermore, candidates are not permitted to bring in any additional papers (loose or attached) with their approved references. Any additional materials will be removed from the references and confiscated. References may be tabbed/indexed with permanent tabs only. Temporary tabs, such as Post-It notes, are not allowed and must be removed from the reference before the examination begins.

### EE-98 Residential and Commercial Electrical Part 3 (Specialties)

# of Questions	% Required to Pass	Time Allowed
50	75% (38 points)	120 Minutes

#### CONTENT OUTLINE

Subject Area	# of Items
Low Voltage, including Alarms	20
Electrical Signs and Outline Lighting	5
Cathodic Protection and Lightning Protection Systems	5
Telephone and Computer Systems	10
Sound and Communication Systems	10

#### REFERENCE LIST

The reference materials listed below were used to prepare the questions for this examination. The examination may also contain questions based on trade knowledge or general industry practices. **Except for Code books**, you can base your answers on later editions of references as they become available. For Code questions, the examinations will be based **only** on the edition of the Code book that is listed.



Candidates may use a silent, non-printing, non-programmable calculator in the examination center. Candidates will also be provided with a magnifying glass upon request.

This examination is OPEN BOOK.

*The following reference materials are allowed in the examination center:*

- *NFPA 72 - National Fire Alarm Code*, 2007, National Fire Protection Association (NFPA), (800) 344-3555, [www.nfpa.org](http://www.nfpa.org)
- *NFPA 70 - National Electrical Code, 2008, or The National Electrical Code Handbook*, National Fire Protection Association (NFPA), (800) 344-3555, [www.nfpa.org](http://www.nfpa.org)

*The following reference materials are not allowed in the examination center:*

- *American Electricians' Handbook*, 15th Edition, McGraw-Hill, (800) 262-4729, [www.books.mcgraw-hill.com](http://www.books.mcgraw-hill.com), ISBN: 0-07-137735
- *Cathodic Protection*, John Morgan, 1987, 2<sup>nd</sup> Edition, National Association of Corrosion Engineers, (800) 797-6223, [www.nace.org](http://www.nace.org), ISBN 0-915567-28-8
- *Low Voltage Wiring: Security/Fire Alarm Systems*, John E. Traister and Terry Kennedy, 2002, 3<sup>rd</sup> Edition, McGraw-Hill, (800) 262-4729, [www.books.mcgraw-hill.com](http://www.books.mcgraw-hill.com)
- *Telecommunications Wiring*, Clyde Herrick, 2001, 3<sup>rd</sup> Edition, Prentice-Hall PTR, (800) 382-3419, [www.prenhall.com](http://www.prenhall.com), ISBN 0-13-028696-6
- *Understanding and Servicing Alarm Systems*, 1999, 3<sup>rd</sup> Edition, Butterworth-Heinemann (Reed Publishing), (800) 545-2522, [www.bh.com](http://www.bh.com), ISBN 0-7506-7206-4
- *Ugly's Electrical References*, George V. Hart, 2008, Burleson Distributing Corp., (800) 531-1660, [www.uglyselectrical.com](http://www.uglyselectrical.com), ISBN 0-9623229-7-0
- *Telecommunications Distribution Methods Manual*, 2003, 10<sup>th</sup> Edition, BICSI, (813) 979-1991, [www.bicsi.org](http://www.bicsi.org)
- *NFPA 75 - Standard for the Protection of Electronic Computer/Data Processing Equipment*, 2003, National Fire Protection Association (NFPA), (800) 344-3555, [www.nfpa.org](http://www.nfpa.org)
- *Live Sound Reinforcement: A Comprehensive Guide to P.A. and Music Reinforcement Systems and Technology*, Scott Hunter Stark, 2002, 2<sup>nd</sup> Edition, (707) 554-1935, [www.courseptr.com/artistpro](http://www.courseptr.com/artistpro), ISBN 0-918371-07-4
- *Data, Voice, and Video Cabling*, Jim Hayes and Paul Rosenberg, 2005, Delmar/Thomson Learning, (800) 347-7707, [www.delmarlearning.com](http://www.delmarlearning.com), ISBN 1401827616
- *CCTV: Networking and Digital Technology*, Vlado Damjanovski, 2005, 2<sup>nd</sup> Edition, Butterworth-Heinemann (Reed Publishing), (800) 545-2522, [www.bh.com](http://www.bh.com), ISBN 0750678003

Candidates are responsible for bringing their own references to the examination center. Reference materials must be bound, and may be highlighted, underlined, annotated, and/or indexed prior to the examination session. However, references may not be written in during the examination session. Any candidate caught writing in the references during the examination will have the references confiscated and will be reported to the department. Furthermore, candidates are not permitted to bring in any additional papers (loose or attached) with their approved references. Any additional materials will be removed from the references and confiscated. References may be tabbed/indexed with

permanent tabs only. Temporary tabs, such as Post-It notes, are not allowed and must be removed from the reference before the examination begins.

### EL-1 Electrical Distribution Systems, including Transmission Lines

# of Questions	% Required to Pass	Time Allowed
100	75% (75 points)	240 Minutes

#### CONTENT OUTLINE

Subject Area	# of Items
General Knowledge and Electrical Installation Requirements	12
Electrical Supply/SubStations	6
Transformers	12
Conductors	12
Poles and Structures	10
Grounding Methods	10
Overhead	8
Underground	8
Equipment and Safety	12
Equipment over 600 Volts	10

#### REFERENCE LIST

The reference materials listed below were used to prepare the questions for this examination. The examination may also contain questions based on trade knowledge or general industry practices. Except for Code books, you can base your answers on later editions of references as they become available. For Code questions, the examinations will be based only on the edition of the Code book that is listed.

Candidates may use a silent, non-printing, non-programmable calculator in the examination center. Candidates will also be provided with a magnifying glass upon request.

This examination is OPEN BOOK.

*The following reference materials are allowed in the examination center:*

- *NFPA 70 - National Electrical Code, 2008, or The National Electrical Code Handbook*, National Fire Protection Association (NFPA), (800) 344-3555, [www.nfpa.org](http://www.nfpa.org)
- *New Mexico Electrical Code (NMAC 14.10.4)*, 2008, [www.nmcpr.state.nm.us/NMAC](http://www.nmcpr.state.nm.us/NMAC), (505) 476-4700
- *National Electrical Safety Code*, 2007, Institute of Electrical and Electronics Engineers, Inc., (732) 981-0060, [www.ieee.org](http://www.ieee.org)

*The following reference materials are not allowed in the examination center:*

- *American Electricians' Handbook*, 15th Edition, McGraw-Hill, (800) 262-4729, [www.books.mcgraw-hill.com](http://www.books.mcgraw-hill.com), ISBN: 0-07-137735
- *The Lineman's and Cableman's Handbook*, 11th Edition, 2007, McGraw-Hill, (800) 262-4729, [www.books.mcgraw-hill.com](http://www.books.mcgraw-hill.com), ISBN: 0-07-136240-1



Candidates are responsible for bringing their own references to the examination center. Reference materials must be bound, and may be highlighted, underlined, annotated, and/or indexed prior to the examination session. However, references may not be written in during the examination session. Any candidate caught writing in the references during the examination will have the references confiscated and will be reported to the department. Furthermore, candidates are not permitted to bring in any additional papers (loose or attached) with their approved references. Any additional materials will be removed from the references and confiscated. References may be tabbed/indexed with permanent tabs only. Temporary tabs, such as Post-It notes, are not allowed and must be removed from the reference before the examination begins.

*The following reference materials are not allowed in the examination center:*

- *American Electricians' Handbook*, 15th Edition, McGraw-Hill, (800) 262-4729, www.books.mcgraw-hill.com, ISBN: 0-07-137735
- *Ugly's Electrical References*, George V. Hart, 2008, Burleson Distributing Corp., (800) 531-1660, www.uglyselectrical.com, ISBN 0-9623229-7-0

Candidates are responsible for bringing their own references to the examination center. Reference materials must be bound, and may be highlighted, underlined, annotated, and/or indexed prior to the examination session. However, references may not be written in during the examination session. Any candidate caught writing in the references during the examination will have the references confiscated and will be reported to the department. Furthermore, candidates are not permitted to bring in any additional papers (loose or attached) with their approved references. Any additional materials will be removed from the references and confiscated. References may be tabbed/indexed with permanent tabs only. Temporary tabs, such as Post-It notes, are not allowed and must be removed from the reference before the examination begins.

### ER-1 Residential Electrical Wiring

# of Questions	% Required to Pass	Time Allowed
80	75% (60 points)	180 Minutes

#### CONTENT OUTLINE

Subject Area	# of Items
General Knowledge and Electrical Installation Requirements	17
Services, Feeders, and Branch Circuits	17
Overcurrent Protection	4
Grounding and Bonding	8
Conductors and Cables	9
Raceways and Boxes	9
Special Occupancies and Special Equipment, including Pools	3
Lighting and General-Use Equipment	3
New Mexico State Code	6
Low Voltage	4

#### REFERENCE LIST

The reference materials listed below were used to prepare the questions for this examination. The examination may also contain questions based on trade knowledge or general industry practices. **Except for Code books**, you can base your answers on later editions of references as they become available. For Code questions, the examinations will be based **only** on the edition of the Code book that is listed.

Candidates may use a silent, non-printing, non-programmable calculator in the examination center. Candidates will also be provided with a magnifying glass upon request.

This examination is OPEN BOOK.

*The following reference materials are allowed in the examination center:*

- *NFPA 70 - National Electrical Code, 2008, or The National Electrical Code Handbook*, National Fire Protection Association (NFPA), (800) 344-3555, www.nfpa.org
- *New Mexico Electrical Code (NMAC 14.10.4)*, 2008, www.nmcpr.state.nm.us/NMAC, (505) 476-4700

### ES-1 Electrical Signs and Outline Lighting

# of Questions	% Required to Pass	Time Allowed
50	75% (38 points)	120 Minutes

#### CONTENT OUTLINE

Subject Area	# of Items
General Knowledge and Theory	15
Wiring and Protection	8
Wiring Methods and Material	12
Equipment For General Use	5
Special Occupancies	5
Special Equipment	5

#### REFERENCE LIST

The reference materials listed below were used to prepare the questions for this examination. The examination may also contain questions based on trade knowledge or general industry practices. **Except for Code books**, you can base your answers on later editions of references as they become available. For Code questions, the examinations will be based **only** on the edition of the Code book that is listed.

Candidates may use a silent, non-printing, non-programmable calculator in the examination center. Candidates will also be provided with a magnifying glass upon request.

This examination is OPEN BOOK.

*The following reference materials are allowed in the examination center:*

- *NFPA 70 - National Electrical Code, 2008, or The National Electrical Code Handbook*, National Fire Protection Association (NFPA), (800) 344-3555, www.nfpa.org



- *New Mexico Electrical Code* (NMAC 14.10.4), 2008, [www.nmcpr.state.nm.us/NMAC](http://www.nmcpr.state.nm.us/NMAC), (505) 476-4700

The following reference materials are not allowed in the examination center:

- *Neon Techniques*, Wayne Strattman, 2003, 4th edition, ST Publications, Inc., (800) 925-1110, [www.stpubs.com](http://www.stpubs.com), ISBN 0-944094-27-9
- *American Electricians' Handbook*, 15th Edition, McGraw-Hill, (800) 262-4729, [www.books.mcgraw-hill.com](http://www.books.mcgraw-hill.com), ISBN: 0-07-137735

Candidates are responsible for bringing their own references to the examination center. Reference materials must be bound, and may be highlighted, underlined, annotated, and/or indexed prior to the examination session. However, references may not be written in during the examination session. Any candidate caught writing in the references during the examination will have the references confiscated and will be reported to the department. Furthermore, candidates are not permitted to bring in any additional papers (loose or attached) with their approved references. Any additional materials will be removed from the references and confiscated. References may be tabbed/indexed with permanent tabs only. Temporary tabs, such as Post-It notes, are not allowed and must be removed from the reference before the examination begins.

## ES-2 Cathodic Protection and Lightning Protection Systems

# of Questions	% Required to Pass	Time Allowed
50	75% (38 points)	120 Minutes

### CONTENT OUTLINE

Subject Area	# of Items
General Electrical Knowledge	15
National Electrical Code	15
Lightning Protection	10
Cathodic Protection	10

### REFERENCE LIST

The reference materials listed below were used to prepare the questions for this examination. The examination may also contain questions based on trade knowledge or general industry practices. **Except for Code books**, you can base your answers on later editions of references as they become available. For Code questions, the examinations will be based **only** on the edition of the Code book that is listed.

Candidates may use a silent, non-printing, non-programmable calculator in the examination center. Candidates will also be provided with a magnifying glass upon request.

This examination is OPEN BOOK.

The following reference materials are allowed in the examination center:

- *NFPA 70 - National Electrical Code, 2008, or The National Electrical Code Handbook*, National Fire Protection Association (NFPA), (800) 344-3555, [www.nfpa.org](http://www.nfpa.org)
- *NFPA 780 - Installation of Lightning Protections Systems*, 2004, National Fire Protection Association (NFPA), (800) 344-3555, [www.nfpa.org](http://www.nfpa.org)
- *New Mexico Electrical Code* (NMAC 14.10.4), 2008, [www.nmcpr.state.nm.us/NMAC](http://www.nmcpr.state.nm.us/NMAC), (505) 476-4700

The following reference materials are not allowed in the examination center:

- *American Electricians' Handbook*, 15th Edition, McGraw-Hill, (800) 262-4729, [www.books.mcgraw-hill.com](http://www.books.mcgraw-hill.com), ISBN: 0-07-137735
- *Pipe Line Corrosion and Cathodic Protection*, Marshall E. Parker, Edward G. Peattie, 1999, 3<sup>rd</sup> edition, Gulf Professional Publishing Company, (800) 545-2522, [www.gulfpp.com](http://www.gulfpp.com), ISBN 0-87201-149-6
- *Handbook of Cathodic Corrosion Protection*, W. Von Baekmann, 1997, 3<sup>rd</sup> edition, Gulf Publishing Company, (715) 529-4301, [www.gulfpub.com](http://www.gulfpub.com), ISBN 0-88415-056-9
- *Control of Pipeline Corrosion*, A.W. Peabody, 2001, 2<sup>nd</sup> edition, National Association of Corrosion Engineers (NACE), (800) 797-6223, [www.nace.org](http://www.nace.org), ISBN 0915567954
- *Ugly's Electrical References*, George V. Hart, 2008, Burleson Distributing Corp., (800) 531-1660, [www.uglyselectrical.com](http://www.uglyselectrical.com), ISBN 0-9623229-7-0

Candidates are responsible for bringing their own references to the examination center. Reference materials must be bound, and may be highlighted, underlined, annotated, and/or indexed prior to the examination session. However, references may not be written in during the examination session. Any candidate caught writing in the references during the examination will have the references confiscated and will be reported to the department. Furthermore, candidates are not permitted to bring in any additional papers (loose or attached) with their approved references. Any additional materials will be removed from the references and confiscated. References may be tabbed/indexed with permanent tabs only. Temporary tabs, such as Post-It notes, are not allowed and must be removed from the reference before the examination begins.

## ES-3 Low Voltage Special Systems (under 50 Volts)

# of Questions	% Required to Pass	Time Allowed
50	75% (38 points)	120 Minutes

### CONTENT OUTLINE

Subject Area	# of Items
Grounding and Bonding	4
Conductors	4
Electrical Power Conditioning	2
Electrical and Electronic Knowledge	6
General Low Voltage	3
Sound and Video Systems	5
Intrusion Detection and Alarms	4
Fire Detection and Alarms	7
Computer and Data Systems	5
CCTV Systems	2
Testing Equipment	2



CATV and MATV Systems	2
Applied Systems Design	4

### REFERENCE LIST

The reference materials listed below were used to prepare the questions for this examination. The examination may also contain questions based on trade knowledge or general industry practices. **Except for Code books**, you can base your answers on later editions of references as they become available. For Code questions, the examinations will be based **only** on the edition of the Code book that is listed.

Candidates may use a silent, non-printing, non-programmable calculator in the examination center. Candidates will also be provided with a magnifying glass upon request.

This examination is OPEN BOOK.

*The following reference materials are allowed in the examination center:*

- *NFPA 70 - National Electrical Code, 2008, or The National Electrical Code Handbook*, National Fire Protection Association (NFPA), (800) 344-3555, [www.nfpa.org](http://www.nfpa.org)
- *NFPA 72 - National Fire Alarm Code, 2007*, National Fire Protection Association (NFPA), (800) 344-3555, [www.nfpa.org](http://www.nfpa.org)
- *New Mexico Electrical Code (NMAC 14.10.4)*, 2008, [www.nmcpr.state.nm.us/NMAC](http://www.nmcpr.state.nm.us/NMAC), (505) 476-4700

*The following reference materials are not allowed in the examination center:*

- *Low Voltage Wiring: Security/Fire Alarm Systems*, John E. Traister and Terry Kennedy, 2002, 3<sup>rd</sup> Edition, McGraw-Hill, (800) 262-4729, [www.books.mcgraw-hill.com](http://www.books.mcgraw-hill.com)
- *Telecommunications Wiring*, Clyde Herrick, 2001, 3<sup>rd</sup> Edition, Prentice-Hall PTR, (800) 382-3419, [www.prenhall.com](http://www.prenhall.com), ISBN 0-13-028696-6
- *Understanding and Servicing Alarm Systems*, 1999, 3<sup>rd</sup> Edition, Butterworth-Heinemann (Reed Publishing), (800) 545-2522, [www.bh.com](http://www.bh.com), ISBN 0-7506-7206-4
- *Live Sound Reinforcement: A Comprehensive Guide to P.A. and Music Reinforcement Systems and Technology*, Scott Hunter Stark, 2002, 2<sup>nd</sup> Edition, (707) 554-1935, [www.courseptr.com/artistpro](http://www.courseptr.com/artistpro), ISBN 0-918371-07-4
- *Data, Voice, and Video Cabling*, Jim Hayes and Paul Rosenberg, 2005, Delmar/Thomson Learning, (800) 347-7707, [www.delmarlearning.com](http://www.delmarlearning.com), ISBN 1401827616
- *Antenna Toolkit*, Joe Carr, 2001, 2nd edition, Butterworth-Heinemann (Reed Publishing), (800) 545-2522, [www.bh.com](http://www.bh.com), ISBN 0-7506-4947-X

Candidates are responsible for bringing their own references to the examination center. Reference materials must be bound, and may be highlighted, underlined, **annotated**, and/or indexed prior to the examination session. However, references may not be written in during the examination session. Any candidate caught writing in the references during the examination will have the references confiscated and will be reported to the department. Furthermore, candidates are not permitted to bring in any additional papers (loose or attached) with their approved references. Any additional materials will be removed from the references and confiscated. References may be tabbed/indexed with permanent tabs only. Temporary tabs, such as Post-It notes,

are not allowed and must be removed from the reference before the examination begins.

### ES-7 Telephone Communication Systems and Telephone Interconnect Systems

# of Questions	% Required to Pass	Time Allowed
50	75% (38 points)	120 Minutes

### CONTENT OUTLINE

Subject Area	# of Items
Grounding and Bonding	5
Conductors	5
Special Occupancies and Equipment	2
General Electrical Knowledge	5
Communication Systems	5
Outside Cabling	5
Cable Transmission and Reception	2
Poles	2
Inside Cabling	5
Network/Data	5
Switching	2
Telephones	3
Underground Cabling	4

### REFERENCE LIST

The reference materials listed below were used to prepare the questions for this examination. The examination may also contain questions based on trade knowledge or general industry practices. **Except for Code books**, you can base your answers on later editions of references as they become available. For Code questions, the examinations will be based **only** on the edition of the Code book that is listed.

Candidates may use a silent, non-printing, non-programmable calculator in the examination center. Candidates will also be provided with a magnifying glass upon request.

This examination is OPEN BOOK.

*The following reference materials are allowed in the examination center:*

- *NFPA 70 - National Electrical Code, 2008, or The National Electrical Code Handbook*, National Fire Protection Association (NFPA), (800) 344-3555, [www.nfpa.org](http://www.nfpa.org)
- *New Mexico Electrical Code (NMAC 14.10.4)*, 2008, [www.nmcpr.state.nm.us/NMAC](http://www.nmcpr.state.nm.us/NMAC), (505) 476-4700
- *National Electrical Safety Code - C2*, 2007, Institute of Electrical and Electronics Engineers, Inc., (732) 981-0060, [www.ieee.org](http://www.ieee.org), ISBN 0-7381-2778-7

*The following reference materials are not allowed in the examination center:*

- *Telecommunications Wiring*, Clyde Herrick, 2001, 3<sup>rd</sup> Edition, Prentice-Hall PTR, (800) 382-3419, [www.prenhall.com](http://www.prenhall.com), ISBN 0-13-028696-6



- *The Lineman's and Cableman's Handbook*, 11th Edition, 2007, McGraw-Hill, (800) 262-4729, [www.books.mcgraw-hill.com](http://www.books.mcgraw-hill.com), ISBN: 0-07-136240-1
- *Direct Current Fundamentals*, Stephen L. Herman, 2006, 7th edition, Thomson Delmar Learning, (800) 347-7707, [www.delmarlearning.com](http://www.delmarlearning.com), ISBN 1418000450
- *Live Sound Reinforcement: A Comprehensive Guide to P.A. and Music Reinforcement Systems and Technology*, Scott Hunter Stark, 2002, 2<sup>nd</sup> Edition, (707) 554-1935, [www.courseptr.com/artistpro](http://www.courseptr.com/artistpro), ISBN 0-918371-07-4
- *Data, Voice, and Video Cabling*, Jim Hayes and Paul Rosenberg, 2005, Delmar/Thomson Learning, (800) 347-7707, [www.delmarlearning.com](http://www.delmarlearning.com), ISBN 1401827616

Candidates are responsible for bringing their own references to the examination center. Reference materials must be bound, and may be highlighted, underlined, annotated, and/or indexed prior to the examination session. However, references may not be written in during the examination session. Any candidate caught writing in the references during the examination will have the references confiscated and will be reported to the department. Furthermore, candidates are not permitted to bring in any additional papers (loose or attached) with their approved references. Any additional materials will be removed from the references and confiscated. References may be tabbed/indexed with permanent tabs only. Temporary tabs, such as Post-It notes, are not allowed and must be removed from the reference before the examination begins.

### GA-1 Streets, Roads, and Highways

# of Questions	% Required to Pass	Time Allowed
60	75% (45 points)	180 Minutes

#### CONTENT OUTLINE

Subject Area	# of Items
Bituminous Surface Treatments and Pavement	15
Earthwork	12
Project Management (Planning, Estimating, Basis of Payment, One Call)	10
Heavy Equipment / Safety	5
Portland Cement Surface Treatments and Pavement	5
Erosion Control	4
Surveying	4
Miscellaneous (Curbs and Gutters, Concrete Wall Barrier, Fences, Signs)	5

#### REFERENCE LIST

The reference materials listed below were used to prepare the questions for this examination. The examination may also contain questions based on trade knowledge or general industry practices. **Except for Code books**, you can base your answers on later editions of references as they become available. For Code questions, the examinations will be based only on the edition of the Code book that is listed.

Candidates may use a silent, non-printing, non-programmable calculator in the examination center. Candidates will also be provided with a magnifying glass upon request.

This examination is OPEN BOOK.

*The following reference materials are allowed in the examination center:*

- *Code of Federal Regulations* - 29 CFR Part 1926 Revised as of 2008 or later (OSHA), Superintendent of Documents, (888) 293-6498, [www.osha.gov](http://www.osha.gov) -OR- Code of Federal Regulations - 29 CFR Part 1926 Selections as of 2008 by PSI, (800) 733-9267, (See order form at the end of this bulletin.)
- *Design and Control of Concrete Mixtures*, Steven H. Kosmatka and William C. Panarese, 2002, 14th Edition, Portland Cement Association, (847) 966-6200, [www.cement.org](http://www.cement.org), ISBN 0-893122173
- *Pipe and Excavation Contracting*, Dave Roberts, 1987, Craftsman Book Company, (800) 829-8123, [www.craftsman-book.com/products](http://www.craftsman-book.com/products), ISBN 0-934041-22-9
- *Hot-Mix Asphalt Paving Handbook*, Carl L. Monismith, Rita B. Leahy, John A. Epps, 2000, American Association of State Highway Transportation Officials, (202) 624-5800, [www.aashto.org](http://www.aashto.org), ISBN 0-309-07157-7
- *Manual on Uniform Traffic Control Devices for Streets and Highways*, 2003, US Department of Transportation - Federal Highway Administration, (202) 366-0537, <http://www.fhwa.dot.gov/>
- *New Mexico Interim Specifications for Highway and Bridge Construction*, 2005, New Mexico Department of Transportation, (505) 827-5100, [www.nmshtd.state.nm.us](http://www.nmshtd.state.nm.us)
- *Storm Water Management for Construction Activities*, 1992, Environmental Protection Agency, (202) 272-0167, [www.epa.gov/npdes/pubs/owm0307.pdf](http://www.epa.gov/npdes/pubs/owm0307.pdf)
- *Asphalt in Pavement Maintenance (MS-16)*, 3<sup>rd</sup> edition, Asphalt Institute, (859) 288-4960, [www.asphaltinstitute.org](http://www.asphaltinstitute.org)
- *New Mexico One Call Excavator Handbook*, 2004, New Mexico One Call, (800) 321-2537, [www.nmonecall.org](http://www.nmonecall.org)
- *New Mexico Department of Transportation Active Standard Drawing Master List and Standard Drawings*, 2006, New Mexico Department of Transportation, (505) 827-5100, [www.nmshtd.state.nm.us](http://www.nmshtd.state.nm.us)
- *Design and Construction of Urban Storm Water Management Systems*, 1992 American Society of Civil Engineers, [www.asce.org](http://www.asce.org)

Candidates are responsible for bringing their own references to the examination center. Reference materials must be bound, and may be highlighted, underlined, annotated, and/or indexed prior to the examination session. However, references may not be written in during the examination session. Any candidate caught writing in the references during the examination will have the references confiscated and will be reported to the department. Furthermore, candidates are not permitted to bring in any additional papers (loose or attached) with their approved references. Any additional materials will be removed from the references and confiscated. References may be tabbed/indexed with permanent tabs only. Temporary tabs, such as Post-It notes, are not allowed and must be removed from the reference before the examination begins.

### GA-2 Maintenance and Repair

# of Questions	% Required to Pass	Time Allowed
30	75% (23 points)	120 Minutes



## CONTENT OUTLINE

Subject Area	# of Items
Bituminous Surface Treatments and Pavements	15
Project Management (Planning, Estimating, Basis of Payment)	5
Portland Cement Surface Treatments and Pavements	5
Heavy Equipment / Safety	5

### REFERENCE LIST

The reference materials listed below were used to prepare the questions for this examination. The examination may also contain questions based on trade knowledge or general industry practices. **Except for Code books**, you can base your answers on later editions of references as they become available. For Code questions, the examinations will be based **only** on the edition of the Code book that is listed.

Candidates may use a silent, non-printing, non-programmable calculator in the examination center. Candidates will also be provided with a magnifying glass upon request.

This examination is OPEN BOOK.

*The following reference materials are allowed in the examination center:*

- *Code of Federal Regulations - 29 CFR Part 1926 Revised as of 2008 or later (OSHA), Superintendent of Documents, (888) 293-6498, [www.osha.gov](http://www.osha.gov) -OR- Code of Federal Regulations - 29 CFR Part 1926 Selections as of 2008 by PSI, (800) 733-9267, (See order form at the end of this bulletin.)*
- *Asphalt in Pavement Maintenance (MS-16), 3<sup>rd</sup> edition, Asphalt Institute, (859) 288-4960, [www.asphaltinstitute.org](http://www.asphaltinstitute.org)*
- *Hot-Mix Asphalt Paving Handbook, Carl L. Monismith, Rita B. Leahy, John A. Epps, 2000, American Association of State Highway Transportation Officials, (202) 624-5800, [www.aashto.org](http://www.aashto.org), ISBN 0-309-07157-7*
- *Manual on Uniform Traffic Control Devices for Streets and Highways, 2003, US Department of Transportation - Federal Highway Administration, (202) 366-0537, <http://www.fhwa.dot.gov/>*
- *Design and Control of Concrete Mixtures, Steven H. Kosmatka and William C. Panarese, 2002, 14th Edition, Portland Cement Association, (847) 966-6200, [www.cement.org](http://www.cement.org), ISBN 0-893122173*
- *New Mexico Interim Specifications for Highway and Bridge Construction, 2005, New Mexico Department of Transportation, (505) 827-5100, [www.nmshtd.state.nm.us](http://www.nmshtd.state.nm.us)*

Candidates are responsible for bringing their own references to the examination center. Reference materials must be bound, and may be highlighted, underlined, annotated, and/or indexed prior to the examination session. However, references may not be written in during the examination session. Any candidate caught writing in the references during the examination will have the references confiscated and will be reported to the department. Furthermore, candidates are not permitted to bring in any additional papers (loose or attached) with their approved references. Any additional materials will be removed from the references and

confiscated. References may be tabbed/indexed with permanent tabs only. Temporary tabs, such as Post-It notes, are not allowed and must be removed from the reference before the examination begins.

## GA-3 Curbs, Gutters, and Culverts

# of Questions	% Required to Pass	Time Allowed
30	75% (23 points)	120 Minutes

### CONTENT OUTLINE

Subject Area	# of Items
Earthwork / Surveying	8
Concrete	5
Curbs and Gutters	5
Culverts	4
Project Management (Planning, Estimating, Basis of Payment, One Call)	4
Heavy Equipment / Safety	4

### REFERENCE LIST

The reference materials listed below were used to prepare the questions for this examination. The examination may also contain questions based on trade knowledge or general industry practices. **Except for Code books**, you can base your answers on later editions of references as they become available. For Code questions, the examinations will be based **only** on the edition of the Code book that is listed.

Candidates may use a silent, non-printing, non-programmable calculator in the examination center. Candidates will also be provided with a magnifying glass upon request.

This examination is OPEN BOOK.

*The following reference materials are allowed in the examination center:*

- *Code of Federal Regulations - 29 CFR Part 1926 Revised as of 2008 or later (OSHA), Superintendent of Documents, (888) 293-6498, [www.osha.gov](http://www.osha.gov) -OR- Code of Federal Regulations - 29 CFR Part 1926 Selections as of 2008 by PSI, (800) 733-9267, (See order form at the end of this bulletin.)*
- *Design and Control of Concrete Mixtures, Steven H. Kosmatka and William C. Panarese, 2002, 14th Edition, Portland Cement Association, (847) 966-6200, [www.cement.org](http://www.cement.org), ISBN 0-893122173*
- *Pipe and Excavation Contracting, Dave Roberts, 1987, Craftsman Book Company, (800) 829-8123, [www.craftsman-book.com/products](http://www.craftsman-book.com/products), ISBN 0-934041-22-9*
- *New Mexico Interim Specifications for Highway and Bridge Construction, 2005, New Mexico Department of Transportation, (505) 827-5100, [www.nmshtd.state.nm.us](http://www.nmshtd.state.nm.us)*
- *New Mexico One Call Excavator Handbook, 2004, New Mexico One Call, (800) 321-2537, [www.nmonecall.org](http://www.nmonecall.org)*
- *Design and Construction of Urban Storm Water Management Systems, 1992 American Society of Civil Engineers, [www.asce.org](http://www.asce.org)*





Candidates are responsible for bringing their own references to the examination center. Reference materials must be bound, and may be highlighted, underlined, annotated, and/or indexed prior to the examination session. However, references may not be written in during the examination session. Any candidate caught writing in the references during the examination will have the references confiscated and will be reported to the department. Furthermore, candidates are not permitted to bring in any additional papers (loose or attached) with their approved references. Any additional materials will be removed from the references and confiscated. References may be tabbed/indexed with permanent tabs only. Temporary tabs, such as Post-It notes, are not allowed and must be removed from the reference before the examination begins.

references may not be written in during the examination session. Any candidate caught writing in the references during the examination will have the references confiscated and will be reported to the department. Furthermore, candidates are not permitted to bring in any additional papers (loose or attached) with their approved references. Any additional materials will be removed from the references and confiscated. References may be tabbed/indexed with permanent tabs only. Temporary tabs, such as Post-It notes, are not allowed and must be removed from the reference before the examination begins.

#### GA-4 Striping

# of Questions	% Required to Pass	Time Allowed
30	75% (23 points)	75 Minutes

#### CONTENT OUTLINE

Subject Area	# of Items
Pavement Markings	16
Planning	6
Equipment/Safety	3
Estimating/Basis of Payment	5

#### REFERENCE LIST

The reference materials listed below were used to prepare the questions for this examination. The examination may also contain questions based on trade knowledge or general industry practices. **Except for Code books**, you can base your answers on later editions of references as they become available. For Code questions, the examinations will be based **only** on the edition of the Code book that is listed.

Candidates may use a silent, non-printing, non-programmable calculator in the examination center. Candidates will also be provided with a magnifying glass upon request.

This examination is OPEN BOOK.

*The following reference materials are allowed in the examination center:*

- *New Mexico Interim Specifications for Highway and Bridge Construction*, 2005, New Mexico Department of Transportation, (505) 827-5100, [www.nmshtd.state.nm.us](http://www.nmshtd.state.nm.us)
- *Manual on Uniform Traffic Control Devices for Streets and Highways*, 2003, US Department of Transportation - Federal Highway Administration, (202) 366-0537, <http://www.fhwa.dot.gov/>
- *"Greenbook" - Standard Specifications for Public Works Construction*, 2006, BNI Publications, Inc., (888) 264-7483, [www.bnibooks.com](http://www.bnibooks.com), ISBN 1557015333

Candidates are responsible for bringing their own references to the examination center. Reference materials must be bound, and may be highlighted, underlined, annotated, and/or indexed prior to the examination session. However, references may not

#### GA-5 Highway Signs and Guard Rails

# of Questions	% Required to Pass	Time Allowed
30	75% (23 points)	75 Minutes

#### CONTENT OUTLINE

Subject Area	# of Items
Metal Barriers, Barricades, Traffic Control Devices	12
Highway Signs	5
Equipment Safety	3
Estimating/Basis of Payment	5
Planning	5

#### REFERENCE LIST

The reference materials listed below were used to prepare the questions for this examination. The examination may also contain questions based on trade knowledge or general industry practices. **Except for Code books**, you can base your answers on later editions of references as they become available. For Code questions, the examinations will be based **only** on the edition of the Code book that is listed.

Candidates may use a silent, non-printing, non-programmable calculator in the examination center. Candidates will also be provided with a magnifying glass upon request.

This examination is OPEN BOOK.

*The following reference materials are allowed in the examination center:*

- *New Mexico Department of Transportation Active Standard Drawing Master List and Standard Drawings*, 2006, New Mexico Department of Transportation, (505) 827-5100, [www.nmshtd.state.nm.us](http://www.nmshtd.state.nm.us)
- *New Mexico Interim Specifications for Highway and Bridge Construction*, 2005, New Mexico Department of Transportation, (505) 827-5100, [www.nmshtd.state.nm.us](http://www.nmshtd.state.nm.us)
- *Manual on Uniform Traffic Control Devices for Streets and Highways*, 2003, US Department of Transportation - Federal Highway Administration, (202) 366-0537, <http://www.fhwa.dot.gov/>

Candidates are responsible for bringing their own references to the examination center. Reference materials must be bound, and may be highlighted, underlined, annotated, and/or indexed prior to the examination session. However, references may not



be written in during the examination session. Any candidate caught writing in the references during the examination will have the references confiscated and will be reported to the department. Furthermore, candidates are not permitted to bring in any additional papers (loose or attached) with their approved references. Any additional materials will be removed from the references and confiscated. References may be tabbed/indexed with permanent tabs only. Temporary tabs, such as Post-It notes, are not allowed and must be removed from the reference before the examination begins.

### **GB-2 Residential Building Contractor Part 1 Examination**

# of Questions	% Required to Pass	Time Allowed
80	75% (60 points)	220 Minutes

#### **CONTENT OUTLINE**

Subject Area	# of Items
Sitework, Footings, and Foundations	9
Concrete and Concrete Reinforcement	9
Masonry	6
Carpentry	12
Roofing	10
Associated Trades	12
General Code, Plan Reading, and Estimating	14
OSHA Safety	8

#### **REFERENCE LIST**

The reference materials listed below were used to prepare the questions for this examination. The examination may also contain questions based on trade knowledge or general industry practices. **Except for Code books**, you can base your answers on later editions of references as they become available. For Code questions, the examinations will be based **only** on the edition of the Code book that is listed.

Candidates may use a silent, non-printing, non-programmable calculator in the examination center. Candidates will also be provided with a magnifying glass upon request.

This examination is OPEN BOOK.

*The following reference materials are allowed in the examination center:*

- New Mexico Administrative Code Title 14, 2004
- *New Mexico Residential Building Code* (NMAC 14.7.3), 2006, [www.nmcpr.state.nm.us/NMAC](http://www.nmcpr.state.nm.us/NMAC), (505) 476-4700
- *International Residential Code for One- and Two-Family Dwellings*, 2006, International Code Council, (800) 786-4452, [www.iccsafe.org](http://www.iccsafe.org) (800) 786-4452, [www.iccsafe.org](http://www.iccsafe.org)  
Beginning July 1, 2010 test questions are to be answered based on either the 2006 or the 2009 editions of the code; beginning January 1, 2011 test questions are to be answered based only on the 2009 edition of the code.
- *International Energy Conservation Code*, 2003, International Code Council, (800) 786-4452, [www.iccsafe.org](http://www.iccsafe.org)

- *The Contractor's Guide to Quality Concrete Construction*, 2005, 3rd Edition, American Concrete Institute, (248) 848-3700, [www.aci-int](http://www.aci-int).
- *Roofing Construction and Estimating*, Daniel Atcheson, 1995, Craftsman Book Company, (800) 829-8123, [www.craftsman-book.com/products](http://www.craftsman-book.com/products), ISBN 1-57218-007-2
- *Guide to Good Practice for Handling, Installing, Restraining, and Bracing of Metal Plate Connected Wood Trusses*, 2006, Wood Truss Council of America, (608) 274-4849, [www.woodtruss.com](http://www.woodtruss.com)
- *Carpentry and Building Construction*, John L. Feirer and Mark D. Feirer, 2010 Edition, Glencoe-McGraw-Hill, (800) 334-7344, [www.glencoe.com](http://www.glencoe.com), ISBN 0-07-822702-X
- *Modern Masonry - Brick, Block, Stone*, Clois E. Kicklighter, 2010 (Seventh Edition), The Goodheart-Willcox Company, (800) 323-0440, [www.goodheartwillcox.com](http://www.goodheartwillcox.com), ISBN 1-56637-962-8
- *Pipe and Excavation Contracting*, Dave Roberts, 1987, Craftsman Book Company, (800) 829-8123, [www.craftsman-book.com/products](http://www.craftsman-book.com/products), ISBN 0-934041-22-9
- *Code of Federal Regulations - 29 CFR Part 1926 Revised as of 2008 or later (OSHA)*, Superintendent of Documents, (888) 293-6498, [www.osha.gov](http://www.osha.gov) -OR- *Code of Federal Regulations - 29 CFR Part 1926 Selections as of 2008 by PSI*, (800) 733-9267, (See order form at the end of this bulletin.)

Candidates are responsible for bringing their own references to the examination center. Reference materials must be bound, and may be highlighted, underlined, annotated, and/or indexed prior to the examination session. However, references may not be written in during the examination session. Any candidate caught writing in the references during the examination will have the references confiscated and will be reported to the department. Furthermore, candidates are not permitted to bring in any additional papers (loose or attached) with their approved references. Any additional materials will be removed from the references and confiscated. References may be tabbed/indexed with permanent tabs only. Temporary tabs, such as Post-It notes, are not allowed and must be removed from the reference before the examination begins.

### **GB-98 General Building Contractor Part 2 Examination**

# of Questions	% Required to Pass	Time Allowed
100	75% (75 points)	300 Minutes

#### **CONTENT OUTLINE**

Subject Area	# of Items
Sitework, Footings, and Foundations	10
Concrete and Concrete Reinforcement	15
Masonry	10
Carpentry	6
Metals	10
Roofing	6
Associated Trades	10
General Code, Plan Reading, and Estimating	27
OSHA Safety	6



## REFERENCE LIST

The reference materials listed below were used to prepare the questions for this examination. The examination may also contain questions based on trade knowledge or general industry practices. **Except for Code books**, you can base your answers on later editions of references as they become available. For Code questions, the examinations will be based **only** on the edition of the Code book that is listed.

Candidates may use a silent, non-printing, non-programmable calculator in the examination center. Candidates will also be provided with a magnifying glass upon request.

This examination is OPEN BOOK.

*The following reference materials are allowed in the examination center:*

- New Mexico Administrative Code Title 14, 2004
- *New Mexico Commercial Building Code* (NMAC 14.7.2), 2006, www.nmcpr.state.nm.us/NMAC, (505) 476-4700
- *International Building Code*, 2006, International Code Council, (800) 786-4452, [www.iccsafe.org](http://www.iccsafe.org)  
Beginning July 1, 2010 test questions are to be answered based on either the 2006 or the 2009 editions of the code; beginning January 1, 2011 test questions are to be answered based only on the 2009 edition of the code.
- *Principles and Practices of Commercial Construction*, Cameron K. Andres and Ronald C. Smith, 2004, 7<sup>th</sup> Edition, Pearson Education, Inc., [www.phcatalog.pearson.com](http://www.phcatalog.pearson.com), ISBN 0-13-048292-7
- *Design and Control of Concrete Mixtures*, Steven H. Kosmatka and William C. Panarese, 2002, 14th Edition, Portland Cement Association, (847) 966-6200, [www.cement.org](http://www.cement.org), ISBN 0-893122173
- *Placing Reinforcing Bars*, 2005, 8th Edition, Concrete Reinforcing Steel Institute, (800) 328-6306, [www.crsi.org](http://www.crsi.org)
- *Gypsum Construction Handbook, 2009 Edition, Publisher-United States Gypsum Company (USG), 125 S. Franklin Street, Chicago, IL 60606, Phone (800) 874-4968, URL-http://www.usg.com, ISBN: 0-9636862-2-4*
- *SDI Manual of Construction with Steel Deck*, 2006, 2nd Edition, Steel Deck Institute, (847) 458-4647, [www.sdi.org](http://www.sdi.org)
- *Training and Certification of Field Personnel for Unbonded Post-Tensioning - Level 1 Field Fundamentals*, 2003, 3rd Edition, Post-Tensioning Institute, (602) 870-7540, [www.post-tensioning.org](http://www.post-tensioning.org), ISBN 1931085250
- *Erectors' Manual - Standards and Guidelines for the Erection of PreCast Concrete Products*, 1999, 2nd Edition, Precast/Prestressed Concrete Institute (PCI), (312) 786-0300, [www.pci.org](http://www.pci.org), ISBN 0-937949-56-8
- *Handling and Erection of Steel Joists and Joist Girders*, 2006, 2nd Edition, Steel Joist Institute, (843) 626-1995, [www.steeljoist.org/publications](http://www.steeljoist.org/publications)
- *Carpentry and Building Construction*, John L. Feirer and Mark D. Feirer, 2010, Glencoe-McGraw-Hill, (800) 334-7344, [www.glencoe.com](http://www.glencoe.com), ISBN 0-07-822702-X
- *Modern Masonry - Brick, Block, Stone*, Clois E. Kicklighter, 2010 (Seventh Edition), The Goodheart-Willcox Company, (800) 323-0440, [www.goodheartwillcox.com](http://www.goodheartwillcox.com), ISBN 1-56637-962-8
- *Pipe and Excavation Contracting*, Dave Roberts, 1987, Craftsman Book Company, (800) 829-8123, [www.craftsman-book.com/products](http://www.craftsman-book.com/products), ISBN 0-934041-22-9
- *Code of Federal Regulations - 29 CFR Part 1926 Revised as of 2008 or later* (OSHA), Superintendent of Documents,

(888) 293-6498, [www.osha.gov](http://www.osha.gov) -OR- Code of Federal Regulations - 29 CFR Part 1926 Selections as of 2008 by PSI, (800) 733-9267, (See order form at the end of this bulletin.)

- *ACI 530-05 or 08 Building Code Requirements for Masonry Structures*, 2005 or 2008, American Concrete Institute, (248) 848-3700, [www.concrete.org](http://www.concrete.org)
- *ACI 318-05 or 08 Building Code Requirements for Structural Concrete and Commentary*, 2005 or 2008, American Concrete Institute, (248) 848-3700, [www.concrete.org](http://www.concrete.org)

Candidates are responsible for bringing their own references to the examination center. Reference materials must be bound, and may be highlighted, underlined, annotated, and/or indexed prior to the examination session. However, references may not be written in during the examination session. Any candidate caught writing in the references during the examination will have the references confiscated and will be reported to the department. Furthermore, candidates are not permitted to bring in any additional papers (loose or attached) with their approved references. Any additional materials will be removed from the references and confiscated. References may be tabbed/indexed with permanent tabs only. Temporary tabs, such as Post-It notes, are not allowed and must be removed from the reference before the examination begins.

### GF-CORE

# of Questions	% Required to Pass	Time Allowed
40	75% (30 points)	100 Minutes

### CONTENT OUTLINE

Subject Area	# of Items
Stormwater Management	10
OSHA Safety	8
Project Management	6
Surveying / Layout	5
New Mexico One-Call	6
Building Code / Inspections	5

### REFERENCE LIST

The reference materials listed below were used to prepare the questions for this examination. The examination may also contain questions based on trade knowledge or general industry practices. **Except for Code books**, you can base your answers on later editions of references as they become available. For Code questions, the examinations will be based **only** on the edition of the Code book that is listed.

Candidates may use a silent, non-printing, non-programmable calculator in the examination center. Candidates will also be provided with a magnifying glass upon request.

This examination is OPEN BOOK.

*The following reference materials are allowed in the examination center:*



- *Storm Water Management for Construction Activities*, 1992, Environmental Protection Agency, (202) 272-0167, [www.epa.gov/npdes/pubs/owm0307.pdf](http://www.epa.gov/npdes/pubs/owm0307.pdf)
- *New Mexico Interim Specifications for Highway and Bridge Construction*, 2005, New Mexico Department of Transportation, (505) 827-5100, [www.nmshtd.state.nm.us](http://www.nmshtd.state.nm.us)
- *Pipe and Excavation Contracting*, Dave Roberts, 1987, Craftsman Book Company, (800) 829-8123, [www.craftsman-book.com/products](http://www.craftsman-book.com/products), ISBN 0-934041-22-9
- *New Mexico One Call Excavator Handbook*, 2004, New Mexico One Call, (800) 321-2537, [www.nmonecall.org](http://www.nmonecall.org)
- *International Building Code*, 2006, International Code Council, (800) 786-4452, [www.iccsafe.org](http://www.iccsafe.org)  
Beginning July 1, 2010 test questions are to be answered based on either the 2006 or the 2009 editions of the code; beginning January 1, 2011 test questions are to be answered based only on the 2009 edition of the code.
- *Code of Federal Regulations - 29 CFR Part 1926 Revised as of 2008 or later (OSHA)*, Superintendent of Documents, (888) 293-6498, [www.osha.gov](http://www.osha.gov) -OR- *Code of Federal Regulations - 29 CFR Part 1926 Selections as of 2008 by PSI*, (800) 733-9267, (See order form at the end of this bulletin.)

Candidates are responsible for bringing their own references to the examination center. Reference materials must be bound, and may be highlighted, underlined, annotated, and/or indexed prior to the examination session. However, references may not be written in during the examination session. Any candidate caught writing in the references during the examination will have the references confiscated and will be reported to the department. Furthermore, candidates are not permitted to bring in any additional papers (loose or attached) with their approved references. Any additional materials will be removed from the references and confiscated. References may be tabbed/indexed with permanent tabs only. Temporary tabs, such as Post-It notes, are not allowed and must be removed from the reference before the examination begins.

### GF-1 Airports

# of Questions	% Required to Pass	Time Allowed
30	75% (23 points)	75 Minutes

#### CONTENT OUTLINE

Subject Area	# of Items
Sitework	10
Runways	15
FAA Regulations	3
Lighting	2

#### REFERENCE LIST

The reference materials listed below were used to prepare the questions for this examination. The examination may also contain questions based on trade knowledge or general industry practices. Except for Code books, you can base your answers on later editions of references as they become available. For Code questions, the examinations will be based only on the edition of the Code book that is listed.

Candidates may use a silent, non-printing, non-programmable calculator in the examination center. Candidates will also be provided with a magnifying glass upon request.

This examination is OPEN BOOK.

*The following reference materials are allowed in the examination center:*

- *Soils and Foundations*, Cheng Liu and Jack B. Evett, 2004, 6<sup>th</sup> edition, Pearson Education, Inc., (201) 236-7000, [www.pearsoned.com](http://www.pearsoned.com), ISBN 0-13-048219-6
- *Standard Specifications for the Construction of Airports - FAA Advisory Circular 150/5370-10B*, 2005, Federal Aviation Administration, (866) 835-5322, [www.faa.gov](http://www.faa.gov)

Candidates are responsible for bringing their own references to the examination center. Reference materials must be bound, and may be highlighted, underlined, annotated, and/or indexed prior to the examination session. However, references may not be written in during the examination session. Any candidate caught writing in the references during the examination will have the references confiscated and will be reported to the department. Furthermore, candidates are not permitted to bring in any additional papers (loose or attached) with their approved references. Any additional materials will be removed from the references and confiscated. References may be tabbed/indexed with permanent tabs only. Temporary tabs, such as Post-It notes, are not allowed and must be removed from the reference before the examination begins.

### GF-2 Bridges

# of Questions	% Required to Pass	Time Allowed
30	75% (23 points)	75 Minutes

#### CONTENT OUTLINE

Subject Area	# of Items
Sitework	10
Concrete	6
Metals	3
Asphalt Pavement	6
Rigging	3
Project Management	2

#### REFERENCE LIST

The reference materials listed below were used to prepare the questions for this examination. The examination may also contain questions based on trade knowledge or general industry practices. Except for Code books, you can base your answers on later editions of references as they become available. For Code questions, the examinations will be based only on the edition of the Code book that is listed.

Candidates may use a silent, non-printing, non-programmable calculator in the examination center. Candidates will also be provided with a magnifying glass upon request.

This examination is OPEN BOOK.



The following reference materials are allowed in the examination center:

- *Construction Handbook for Bridge Temporary Works*, 1995, 1<sup>st</sup> edition, American Association of State Highway Transportation Officials, (202) 624-5800, [www.asshto.org](http://www.asshto.org)
- *Design and Control of Concrete Mixtures*, Steven H. Kosmatka and William C. Panarese, 2002, 14th Edition, Portland Cement Association, (847) 966-6200, [www.cement.org](http://www.cement.org), ISBN 0-893122173
- *Handbook of Rigging for Construction and Industrial Operations*, W.E. Rosznagel, 1988, 5<sup>th</sup> edition, McGraw-Hill, (800) 262-4729, [www.books.mcgraw-hill.com](http://www.books.mcgraw-hill.com), ISBN 0071493018
- *Hot-Mix Asphalt Paving Handbook*, Carl L. Monismith, Rita B. Leahy, John A. Epps, 2000, American Association of State Highway Transportation Officials, (202) 624-5800, [www.aashto.org](http://www.aashto.org), ISBN 0-309-07157-7
- *New Mexico Interim Specifications for Highway and Bridge Construction*, 2005, New Mexico Department of Transportation, (505) 827-5100, [www.nmshtd.state.nm.us](http://www.nmshtd.state.nm.us)
- *Construction Planning, Equipment, and Methods*, Robert L. Peurifoy, 2005, 7<sup>th</sup> edition, McGraw-Hill, (800) 262-4729, [www.books.mcgraw-hill.com](http://www.books.mcgraw-hill.com), ISBN 0-07-296420-0

Candidates are responsible for bringing their own references to the examination center. Reference materials must be bound, and may be highlighted, underlined, **annotated**, and/or indexed prior to the examination session. However, references may not be written in during the examination session. Any candidate caught writing in the references during the examination will have the references confiscated and will be reported to the department. Furthermore, candidates are not permitted to bring in any additional papers (loose or attached) with their approved references. Any additional materials will be removed from the references and confiscated. References may be tabbed/indexed with permanent tabs only. Temporary tabs, such as Post-It notes, are not allowed and must be removed from the reference before the examination begins.

### GF-3 Canals, Reservoirs, or Irrigation Systems

# of Questions	% Required to Pass	Time Allowed
30	75% (23 points)	75 Minutes

#### CONTENT OUTLINE

Subject Area	# of Items
Irrigation	10
Concrete	5
Sitework	15

#### REFERENCE LIST

The reference materials listed below were used to prepare the questions for this examination. The examination may also contain questions based on trade knowledge or general industry practices. **Except for Code books**, you can base your answers on later editions of references as they become available. For Code questions, the examinations will be based **only** on the edition of the Code book that is listed.

Candidates may use a silent, non-printing, non-programmable calculator in the examination center. Candidates will also be provided with a magnifying glass upon request.

This examination is OPEN BOOK.

The following reference materials are allowed in the examination center:

- *Pipe and Excavation Contracting*, Dave Roberts, 1987, Craftsman Book Company, (800) 829-8123, [www.craftsman-book.com/products](http://www.craftsman-book.com/products), ISBN 0-934041-22-9
- *Simplified Irrigation Design*, Pete Melby, 1995, 2<sup>nd</sup> edition, John Wiley and Sons, Inc., (201) 748-6000, [www.wiley.com](http://www.wiley.com), ISBN 0-471-28622-2
- *Design and Control of Concrete Mixtures*, Steven H. Kosmatka and William C. Panarese, 2002, 14th Edition, Portland Cement Association, (847) 966-6200, [www.cement.org](http://www.cement.org), ISBN 0-893122173

Candidates are responsible for bringing their own references to the examination center. Reference materials must be bound, and may be highlighted, underlined, **annotated**, and/or indexed prior to the examination session. However, references may not be written in during the examination session. Any candidate caught writing in the references during the examination will have the references confiscated and will be reported to the department. Furthermore, candidates are not permitted to bring in any additional papers (loose or attached) with their approved references. Any additional materials will be removed from the references and confiscated. References may be tabbed/indexed with permanent tabs only. Temporary tabs, such as Post-It notes, are not allowed and must be removed from the reference before the examination begins.

### GF-4 Drainage or Flood Control Systems

# of Questions	% Required to Pass	Time Allowed
30	75% (23 points)	75 Minutes

#### CONTENT OUTLINE

Subject Area	# of Items
Earthwork	9
Culverts and Pipe	9
Concrete	9
Project Management	3

#### REFERENCE LIST

The reference materials listed below were used to prepare the questions for this examination. The examination may also contain questions based on trade knowledge or general industry practices. **Except for Code books**, you can base your answers on later editions of references as they become available. For Code questions, the examinations will be based **only** on the edition of the Code book that is listed.

Candidates may use a silent, non-printing, non-programmable calculator in the examination center. Candidates will also be provided with a magnifying glass upon request.

This examination is OPEN BOOK.



The following reference materials are allowed in the examination center:

- *Design and Construction of Urban Storm Water Management Systems*, 1992 American Society of Civil Engineers, [www.asce.org](http://www.asce.org)-8
- *New Mexico Interim Specifications for Highway and Bridge Construction*, 2005, New Mexico Department of Transportation, (505) 827-5100, [www.nmshtd.state.nm.us](http://www.nmshtd.state.nm.us)
- *Construction Planning, Equipment, and Methods*, Robert L. Peurifoy, 2005, 7<sup>th</sup> Edition, McGraw-Hill, (800) 262-4729, [www.books.mcgraw-hill.com](http://www.books.mcgraw-hill.com), ISBN 0-07-296420-0
- *Installation Guide for Ductile Iron Pipe*, 2000, Ductile Iron Pipe Research Association, (205) 402-8700, [www.dipra.org](http://www.dipra.org), ISBN 0-9642194-0-9

Candidates are responsible for bringing their own references to the examination center. Reference materials must be bound, and may be highlighted, underlined, annotated, and/or indexed prior to the examination session. However, references may not be written in during the examination session. Any candidate caught writing in the references during the examination will have the references confiscated and will be reported to the department. Furthermore, candidates are not permitted to bring in any additional papers (loose or attached) with their approved references. Any additional materials will be removed from the references and confiscated. References may be tabbed/indexed with permanent tabs only. Temporary tabs, such as Post-It notes, are not allowed and must be removed from the reference before the examination begins.

The following reference materials are allowed in the examination center:

- *Design and Control of Concrete Mixtures*, Steven H. Kosmatka and William C. Panarese, 2002, 14th Edition, Portland Cement Association, (847) 966-6200, [www.cement.org](http://www.cement.org), ISBN 0-893122173
- *Pipe and Excavation Contracting*, Dave Roberts, 1987, Craftsman Book Company, (800) 829-8123, [www.craftsman-book.com/products](http://www.craftsman-book.com/products), ISBN 0-934041-22-9
- *Design and Construction of Urban Storm Water Management Systems*, 1992 American Society of Civil Engineers, [www.asce.org](http://www.asce.org)
- *Simplified Irrigation Design*, Pete Melby, 1995, 2<sup>nd</sup> edition, John Wiley and Sons, Inc., (201) 748-6000, [www.wiley.com](http://www.wiley.com), ISBN 0-471-28622-2
- *Soils and Foundations*, Cheng Liu and Jack B. Evett, 2004, 6<sup>th</sup> edition, Pearson Education, Inc., (201) 236-7000, [www.pearsoned.com](http://www.pearsoned.com), ISBN 0-13-048219-6
- *New Mexico Interim Specifications for Highway and Bridge Construction*, 2005, New Mexico Department of Transportation, (505) 827-5100, [www.nmshtd.state.nm.us](http://www.nmshtd.state.nm.us)

Candidates are responsible for bringing their own references to the examination center. Reference materials must be bound, and may be highlighted, underlined, annotated, and/or indexed prior to the examination session. However, references may not be written in during the examination session. Any candidate caught writing in the references during the examination will have the references confiscated and will be reported to the department. Furthermore, candidates are not permitted to bring in any additional papers (loose or attached) with their approved references. Any additional materials will be removed from the references and confiscated. References may be tabbed/indexed with permanent tabs only. Temporary tabs, such as Post-It notes, are not allowed and must be removed from the reference before the examination begins.

### GF-5 Recreation Areas

# of Questions	% Required to Pass	Time Allowed
30	75% (23 points)	75 Minutes

#### CONTENT OUTLINE

Subject Area	# of Items
Sitework	15
Irrigation	6
Concrete	5
Project Management	4

#### REFERENCE LIST

The reference materials listed below were used to prepare the questions for this examination. The examination may also contain questions based on trade knowledge or general industry practices. **Except for Code books**, you can base your answers on later editions of references as they become available. For Code questions, the examinations will be based **only** on the edition of the Code book that is listed.

Candidates may use a silent, non-printing, non-programmable calculator in the examination center. Candidates will also be provided with a magnifying glass upon request.

This examination is OPEN BOOK.

### GF-6 Railroad and Tunnel Construction

#### SCOPE OF WORK

Railroad and tunnel construction. Construct railroad lines, including clearing, filling, shaping, compacting, placing rip-rap, stabilizing, setting roadbeds, ties, tie plates, rails, rail connectors, frogs, switch plates, switches, and all appurtenances necessary for an operational railroad line, including bridges, culverts, tunnels, retaining walls, dikes, fences, gates, tool sheds and landing or parking platforms for equipment. Includes welding operations necessary for rail construction.

You will be allowed 2 hours to write an essay examination describing, in as much detail as possible, the tasks required to perform the above license classification. We want to know how you would do each task (using the labor, material, and equipment required) on a step-by-step basis. You may describe projects that you have done to completely explain the knowledge, skills and abilities required to perform a quality job in a safe and efficient manner.

This examination is CLOSED BOOK.

### GF-7 Tanks and Towers



# of Questions	% Required to Pass	Time Allowed
30	75% (23 points)	75 Minutes

### CONTENT OUTLINE

Subject Area	# of Items
Miscellaneous Structures	7
Sitework / Excavation	3
Welding	4
Paving and Surfacing	3
Tanks	10
Towers	3

### REFERENCE LIST

The reference materials listed below were used to prepare the questions for this examination. The examination may also contain questions based on trade knowledge or general industry practices. **Except for Code books**, you can base your answers on later editions of references as they become available. For Code questions, the examinations will be based **only** on the edition of the Code book that is listed.

Candidates may use a silent, non-printing, non-programmable calculator in the examination center. Candidates will also be provided with a magnifying glass upon request.

This examination is OPEN BOOK.

*The following reference materials are allowed in the examination center:*

- *Welded Carbon Steel Tanks for Water Storage - AWWA Standard*, 2006, American Water Works Association, (800) 926-7335, [www.awwa.org](http://www.awwa.org)
- *Hot-Mix Asphalt Paving Handbook*, Carl L. Monismith, Rita B. Leahy, John A. Epps, 2000, American Association of State Highway Transportation Officials, (202) 624-5800, [www.aashto.org](http://www.aashto.org), ISBN 0-309-07157-7
- *Recommended Practices for Installation of Underground Liquid Storage Systems (RP100)*, 2005, Petroleum Equipment Institute, (918) 494-9696, [www.pei.org](http://www.pei.org)
- *Pipe and Excavation Contracting*, Dave Roberts, 1987, Craftsman Book Company, (800) 829-8123, [www.craftsman-book.com/products](http://www.craftsman-book.com/products), ISBN 0-934041-22-9
- *Steel Water-Storage Tanks - AWWA Manual M42*, 1998, 1<sup>st</sup> edition, American Water Works Association, (800) 926-7335, [www.awwa.org](http://www.awwa.org), ISBN 0-89867-977-X

Candidates are responsible for bringing their own references to the examination center. Reference materials must be bound, and may be highlighted, underlined, annotated, and/or indexed prior to the examination session. However, references may not be written in during the examination session. Any candidate caught writing in the references during the examination will have the references confiscated and will be reported to the department. Furthermore, candidates are not permitted to bring in any additional papers (loose or attached) with their approved references. Any additional materials will be removed from the references and confiscated. References may be tabbed/indexed with permanent tabs only. Temporary tabs, such as Post-It notes, are not allowed and must be removed from the reference before the examination begins.

### GF-8 Transmission Lines, Tanks, and Substations (Non-Electrical)

# of Questions	% Required to Pass	Time Allowed
30	75% (23 points)	120 Minutes

### CONTENT OUTLINE

Subject Area	# of Items
Tanks and Pipelines	12
Miscellaneous Structures / Corrosion Protection	6
Welding	4
Heavy Equipment / Safety	4
Paving and Surfacing	4

### REFERENCE LIST

The reference materials listed below were used to prepare the questions for this examination. The examination may also contain questions based on trade knowledge or general industry practices. **Except for Code books**, you can base your answers on later editions of references as they become available. For Code questions, the examinations will be based **only** on the edition of the Code book that is listed.

Candidates may use a silent, non-printing, non-programmable calculator in the examination center. Candidates will also be provided with a magnifying glass upon request.

This examination is OPEN BOOK.

*The following reference materials are allowed in the examination center:*

- *Code of Federal Regulations - 29 CFR Part 1926 Revised as of 2008 or later (OSHA)*, Superintendent of Documents, (888) 293-6498, [www.osha.gov](http://www.osha.gov) **-OR-** *Code of Federal Regulations - 29 CFR Part 1926 Selections as of 2008 by PSI*, (800) 733-9267, (See order form at the end of this bulletin.)
- *49 CFR Parts 178-199 (Transportation)*, 2004, Subchapter D, Pipeline Safety, (888) 293-6498, [www.bookstore.gpo.gov](http://www.bookstore.gpo.gov) OR [www.osha.gov](http://www.osha.gov)
- *Handbook of Rigging for Construction and Industrial Operations*, W.E. Rossnagel, 1988, 5<sup>th</sup> edition, McGraw-Hill, (800) 262-4729, [www.books.mcgraw-hill.com](http://www.books.mcgraw-hill.com), ISBN 0071493018
- *Hot-Mix Asphalt Paving Handbook*, Carl L. Monismith, Rita B. Leahy, John A. Epps, 2000, American Association of State Highway Transportation Officials, (202) 624-5800, [www.aashto.org](http://www.aashto.org), ISBN 0-309-07157-7
- *Modern Welding*, 2004, The Goodheart-Willcox Company, Inc., (800) 323-0440, [www.goodheartwillcox.com](http://www.goodheartwillcox.com), ISBN 1-56637-987-3
- *Pipe and Excavation Contracting*, Dave Roberts, 1987, Craftsman Book Company, (800) 829-8123, [www.craftsman-book.com/products](http://www.craftsman-book.com/products), ISBN 0-934041-22-9
- *Design and Construction of Large, Welded, Low-Pressure Storage Tanks - API Standard 620*, 2002, 10th edition, American Petroleum Institute, (202) 682-8000, [www.api.org](http://www.api.org)



- *Welded Steel Tanks for Oil Storage - API Standard 650*, 1998, 10th edition, American Petroleum Institute, (202) 682-8000, [www.api.org](http://www.api.org)

Candidates are responsible for bringing their own references to the examination center. Reference materials must be bound, and may be highlighted, underlined, annotated, and/or indexed prior to the examination session. However, references may not be written in during the examination session. Any candidate caught writing in the references during the examination will have the references confiscated and will be reported to the department. Furthermore, candidates are not permitted to bring in any additional papers (loose or attached) with their approved references. Any additional materials will be removed from the references and confiscated. References may be tabbed/indexed with permanent tabs only. Temporary tabs, such as Post-It notes, are not allowed and must be removed from the reference before the examination begins.

### GF-9 Utility Lines

# of Questions	% Required to Pass	Time Allowed
35	75% (27 points)	90 Minutes

#### CONTENT OUTLINE

Subject Area	# of Items
Pipe/Miscellaneous Structures	15
Earthwork	7
Surface Repair	5
Project Management	8

#### REFERENCE LIST

The reference materials listed below were used to prepare the questions for this examination. The examination may also contain questions based on trade knowledge or general industry practices. **Except for Code books**, you can base your answers on later editions of references as they become available. For Code questions, the examinations will be based **only** on the edition of the Code book that is listed.

Candidates may use a silent, non-printing, non-programmable calculator in the examination center. Candidates will also be provided with a magnifying glass upon request.

This examination is OPEN BOOK.

*The following reference materials are allowed in the examination center:*

- *New Mexico Interim Specifications for Highway and Bridge Construction*, 2005, New Mexico Department of Transportation, (505) 827-5100, [www.nmshtd.state.nm.us](http://www.nmshtd.state.nm.us)
- *PVC Pipe - Design and Installation - AWWA Manual M23*, 2002, 2<sup>nd</sup> edition, American Water Works Association, (800) 926-7335, [www.awwa.org](http://www.awwa.org), ISBN 1-58321-171-3
- *Hot-Mix Asphalt Paving Handbook*, Carl L. Monismith, Rita B. Leahy, John A. Epps, 2000, American Association of State Highway Transportation Officials, (202) 624-5800, [www.aashto.org](http://www.aashto.org), ISBN 0-309-07157-7

- *Installation Guide for Ductile Iron Pipe*, 2000, Ductile Iron Pipe Research Association, (205) 402-8700, [www.dipra.org](http://www.dipra.org), ISBN 0-9642194-0-9
- *Design and Construction of Urban Storm Water Management Systems*, 1992 American Society of Civil Engineers, [www.asce.org](http://www.asce.org)
- *Construction Planning, Equipment, and Methods*, Robert L. Peurifoy, 2005, 7<sup>th</sup> edition, McGraw-Hill, (800) 262-4729, [www.books.mcgraw-hill.com](http://www.books.mcgraw-hill.com), ISBN 0-07-296420-0

Candidates are responsible for bringing their own references to the examination center. Reference materials must be bound, and may be highlighted, underlined, annotated, and/or indexed prior to the examination session. However, references may not be written in during the examination session. Any candidate caught writing in the references during the examination will have the references confiscated and will be reported to the department. Furthermore, candidates are not permitted to bring in any additional papers (loose or attached) with their approved references. Any additional materials will be removed from the references and confiscated. References may be tabbed/indexed with permanent tabs only. Temporary tabs, such as Post-It notes, are not allowed and must be removed from the reference before the examination begins.

### GS-4 Concrete, Cement, Walkways, and Driveways

# of Questions	% Required to Pass	Time Allowed
60	75% (45 points)	150 Minutes

#### CONTENT OUTLINE

Subject Area	# of Items
Estimating and Plan Reading	10
Layout and Excavation	12
Formwork	8
Reinforcing Steel	8
General Concrete	16
Safety	6

#### REFERENCE LIST

The reference materials listed below were used to prepare the questions for this examination. The examination may also contain questions based on trade knowledge or general industry practices. **Except for Code books**, you can base your answers on later editions of references as they become available. For Code questions, the examinations will be based **only** on the edition of the Code book that is listed.

Candidates may use a silent, non-printing, non-programmable calculator in the examination center. Candidates will also be provided with a magnifying glass upon request.

This examination is OPEN BOOK.

*The following reference materials are allowed in the examination center:*

- *Code of Federal Regulations - 29 CFR Part 1926 Revised as of 2008 or later* (OSHA), Superintendent of Documents, (888) 293-6498, [www.osha.gov](http://www.osha.gov) **-OR-** *Code of Federal Regulations - 29 CFR Part 1926 Selections as of 2008 by PSI*,





(800) 733-9267, (See order form at the end of this bulletin.)

- *Design and Control of Concrete Mixtures*, Steven H. Kosmatka and William C. Panarese, 2002, 14th Edition, Portland Cement Association, (847) 966-6200, [www.cement.org](http://www.cement.org), ISBN 0-893122173
- *Pipe and Excavation Contracting*, Dave Roberts, 1987, Craftsman Book Company, (800) 829-8123, [www.craftsman-book.com/products](http://www.craftsman-book.com/products), ISBN 0-934041-22-9
- *New Mexico Commercial Building Code* (NMAC 14.7.2), 2006, [www.nmcpr.state.nm.us/NMAC](http://www.nmcpr.state.nm.us/NMAC), (505) 476-4700
- *New Mexico Residential Building Code* (NMAC 14.7.3), 2006, [www.nmcpr.state.nm.us/NMAC](http://www.nmcpr.state.nm.us/NMAC), (505) 476-4700
- *International Building Code*, 2006, International Code Council, (800) 786-4452, [www.iccsafe.org](http://www.iccsafe.org)  
Beginning July 1, 2010 test questions are to be answered based on either the 2006 or the 2009 editions of the code; beginning January 1, 2011 test questions are to be answered based only on the 2009 edition of the code.
- *International Residential Code for One- and Two-Family Dwellings*, 2006, International Code Council, (800) 786-4452, [www.iccsafe.org](http://www.iccsafe.org) (800) 786-4452, [www.iccsafe.org](http://www.iccsafe.org)  
Beginning July 1, 2010 test questions are to be answered based on either the 2006 or the 2009 editions of the code; beginning January 1, 2011 test questions are to be answered based only on the 2009 edition of the code.
- *Formwork for Concrete*, M.K. Hurd, 2005, 7<sup>th</sup> edition, American Concrete Institute, (248) 848-3700, [www.aci-int.org](http://www.aci-int.org)
- *Placing Reinforcing Bars, Recommended Practices*, Seventh Edition, 1997, Concrete Reinforcing Steel Institute, (800) 328-6306, [www.crsi.org](http://www.crsi.org)
- *ACI 318-05or 08 Building Code Requirements for Structural Concrete and Commentary*, 2005 or 2008, American Concrete Institute, (248) 848-3700, [www.concrete.org](http://www.concrete.org)

Candidates are responsible for bringing their own references to the examination center. Reference materials must be bound, and may be highlighted, underlined, annotated, and/or indexed prior to the examination session. However, references may not be written in during the examination session. Any candidate caught writing in the references during the examination will have the references confiscated and will be reported to the department. Furthermore, candidates are not permitted to bring in any additional papers (loose or attached) with their approved references. Any additional materials will be removed from the references and confiscated. References may be tabbed/indexed with permanent tabs only. Temporary tabs, such as Post-It notes, are not allowed and must be removed from the reference before the examination begins.

### GS-6 Door Installation

# of Questions	% Required to Pass	Time Allowed
30	75% (23 points)	120 Minutes

#### CONTENT OUTLINE

Subject Area	# of Items
Doors and Frames	14
Doors Hardware	9
Special Doors	4

### REFERENCE LIST

The reference materials listed below were used to prepare the questions for this examination. The examination may also contain questions based on trade knowledge or general industry practices. **Except for Code books**, you can base your answers on later editions of references as they become available. For Code questions, the examinations will be based **only** on the edition of the Code book that is listed.

Candidates may use a silent, non-printing, non-programmable calculator in the examination center. Candidates will also be provided with a magnifying glass upon request.

This examination is OPEN BOOK.

*The following reference materials are allowed in the examination center:*

- *Carpentry and Building Construction*, John L. Feirer and Mark D. Feirer, 2010, Glencoe-McGraw-Hill, (800) 334-7344, [www.glencoe.com](http://www.glencoe.com), ISBN 0-07-822702-X
- *International Residential Code for One- and Two-Family Dwellings*, 2006, International Code Council, (800) 786-4452, [www.iccsafe.org](http://www.iccsafe.org) (800) 786-4452, [www.iccsafe.org](http://www.iccsafe.org)  
Beginning July 1, 2010 test questions are to be answered based on either the 2006 or the 2009 editions of the code; beginning January 1, 2011 test questions are to be answered based only on the 2009 edition of the code.
- *International Building Code*, 2006, International Code Council, (800) 786-4452, [www.iccsafe.org](http://www.iccsafe.org)  
Beginning July 1, 2010 test questions are to be answered based on either the 2006 or the 2009 editions of the code; beginning January 1, 2011 test questions are to be answered based only on the 2009 edition of the code.

Candidates are responsible for bringing their own references to the examination center. Reference materials must be bound, and may be highlighted, underlined, annotated, and/or indexed prior to the examination session. However, references may not be written in during the examination session. Any candidate caught writing in the references during the examination will have the references confiscated and will be reported to the department. Furthermore, candidates are not permitted to bring in any additional papers (loose or attached) with their approved references. Any additional materials will be removed from the references and confiscated. References may be tabbed/indexed with permanent tabs only. Temporary tabs, such as Post-It notes, are not allowed and must be removed from the reference before the examination begins.

### GS-7 Drywall Installation and Texture

# of Questions	% Required to Pass	Time Allowed
40	75% (30 points)	120 Minutes

#### CONTENT OUTLINE

Subject Area	# of Items
Estimating and Plan Reading	6
Materials and Installation	19
Taping	4



Special Applications	6
Safety	5

### REFERENCE LIST

The reference materials listed below were used to prepare the questions for this examination. The examination may also contain questions based on trade knowledge or general industry practices. **Except for Code books**, you can base your answers on later editions of references as they become available. For Code questions, the examinations will be based **only** on the edition of the Code book that is listed.

Candidates may use a silent, non-printing, non-programmable calculator in the examination center. Candidates will also be provided with a magnifying glass upon request.

This examination is OPEN BOOK.

*The following reference materials are allowed in the examination center:*

- *Code of Federal Regulations - 29 CFR Part 1926 Revised as of 2008 or later (OSHA), Superintendent of Documents, (888) 293-6498, [www.osha.gov](http://www.osha.gov) -OR- Code of Federal Regulations - 29 CFR Part 1926 Selections as of 2008 by PSI, (800) 733-9267, (See order form at the end of this bulletin.)*
- *New Mexico Commercial Building Code (NMAC 14.7.2), 2006, [www.nmcpr.state.nm.us/NMAC](http://www.nmcpr.state.nm.us/NMAC), (505) 476-4700*
- *New Mexico Residential Building Code (NMAC 14.7.3), 2006, [www.nmcpr.state.nm.us/NMAC](http://www.nmcpr.state.nm.us/NMAC), (505) 476-4700*
- *International Building Code, 2006, International Code Council, (800) 786-4452, [www.iccsafe.org](http://www.iccsafe.org)  
Beginning July 1, 2010 test questions are to be answered based on either the 2006 or the 2009 editions of the code; beginning January 1, 2011 test questions are to be answered based only on the 2009 edition of the code.*
- *International Residential Code for One- and Two-Family Dwellings, 2006, International Code Council, (800) 786-4452, [www.iccsafe.org](http://www.iccsafe.org) (800) 786-4452, [www.iccsafe.org](http://www.iccsafe.org)  
Beginning July 1, 2010 test questions are to be answered based on either the 2006 or the 2009 editions of the code; beginning January 1, 2011 test questions are to be answered based only on the 2009 edition of the code.*
- *Gypsum Construction Handbook, 2009 Edition, Publisher-United States Gypsum Company (USG), 125 S. Franklin Street, Chicago, IL 60606, Phone (800) 874-4968, URL-<http://www.usg.com>, ISBN: 0-9636862-2-4.*

Candidates are responsible for bringing their own references to the examination center. Reference materials must be bound, and may be highlighted, underlined, annotated, and/or indexed prior to the examination session. However, references may not be written in during the examination session. Any candidate caught writing in the references during the examination will have the references confiscated and will be reported to the department. Furthermore, candidates are not permitted to bring in any additional papers (loose or attached) with their approved references. Any additional materials will be removed from the references and confiscated. References may be tabbed/indexed with permanent tabs only. Temporary tabs, such as Post-It notes, are not allowed and must be removed from the reference before the examination begins.

### GS-8 Earthmoving, Excavation, and Ditching

# of Questions	% Required to Pass	Time Allowed
40	75% (30 points)	120 Minutes

### CONTENT OUTLINE

Subject Area	# of Items
Estimating and Plan Reading	4
Equipment and Technique	6
Compaction	10
Soil Types	10
Specialty Work (Blasting, Shoring)	6
Safety	4

### REFERENCE LIST

The reference materials listed below were used to prepare the questions for this examination. The examination may also contain questions based on trade knowledge or general industry practices. **Except for Code books**, you can base your answers on later editions of references as they become available. For Code questions, the examinations will be based **only** on the edition of the Code book that is listed.

Candidates may use a silent, non-printing, non-programmable calculator in the examination center. Candidates will also be provided with a magnifying glass upon request.

This examination is OPEN BOOK.

*The following reference materials are allowed in the examination center:*

- *Code of Federal Regulations - 29 CFR Part 1926 Revised as of 2008 or later (OSHA), Superintendent of Documents, (888) 293-6498, [www.osha.gov](http://www.osha.gov) -OR- Code of Federal Regulations - 29 CFR Part 1926 Selections as of 2008 by PSI, (800) 733-9267, (See order form at the end of this bulletin.)*
- *Pipe and Excavation Contracting, Dave Roberts, 1987, Craftsman Book Company, (800) 829-8123, [www.craftsman-book.com/products](http://www.craftsman-book.com/products), ISBN 0-934041-22-9*
- *International Building Code, 2006, International Code Council, (800) 786-4452, [www.iccsafe.org](http://www.iccsafe.org)  
Beginning July 1, 2010 test questions are to be answered based on either the 2006 or the 2009 editions of the code; beginning January 1, 2011 test questions are to be answered based only on the 2009 edition of the code.*

Candidates are responsible for bringing their own references to the examination center. Reference materials must be bound, and may be highlighted, underlined, annotated, and/or indexed prior to the examination session. However, references may not be written in during the examination session. Any candidate caught writing in the references during the examination will have the references confiscated and will be reported to the department. Furthermore, candidates are not permitted to bring in any additional papers (loose or attached) with their approved references. Any additional materials will be removed from the references and confiscated. References may be



tabbed/indexed with permanent tabs only. Temporary tabs, such as Post-It notes, are not allowed and must be removed from the reference before the examination begins.

### GS-9 Elevators, Escalators, Conveyors

# of Questions	% Required to Pass	Time Allowed
60	75% (45 points)	180 Minutes

#### CONTENT OUTLINE

Subject Area	# of Items
Commercial Elevators	27
Residential Elevators	8
Escalators	8
Moving Walks	4
Dumbwaiters	4
Emergency Service	4
Safety	5

#### REFERENCE LIST

The reference materials listed below were used to prepare the questions for this examination. The examination may also contain questions based on trade knowledge or general industry practices. **Except for Code books**, you can base your answers on later editions of references as they become available. For Code questions, the examinations will be based **only** on the edition of the Code book that is listed.

Candidates may use a silent, non-printing, non-programmable calculator in the examination center. Candidates will also be provided with a magnifying glass upon request.

This examination is OPEN BOOK.

*The following reference materials are allowed in the examination center:*

- ASME A17.1 - Safety Code for Elevators and Escalators, 2004, American Society of Mechanical Engineers, (800) 843-2763, [www.asme.org](http://www.asme.org), ISBN 0-7918-2820-4
- ASME A17.2.3 - Inspectors' Manual for Escalators and Moving Walks, 2004, American Society of Mechanical Engineers, (800) 843-2763, [www.asme.org](http://www.asme.org), ISBN 0-7918-2820-4
- ASME A17.3 - Safety Code for Existing Elevators and Escalators, 2005, American Society of Mechanical Engineers, (800) 843-2763, [www.asme.org](http://www.asme.org), ISBN 0-7918-2820-4
- *Code of Federal Regulations* - 29 CFR Part 1926 Revised as of 2008 or later (OSHA), Superintendent of Documents, (888) 293-6498, [www.osha.gov](http://www.osha.gov) -OR- *Code of Federal Regulations* - 29 CFR Part 1926 Selections as of 2008 by PSI, (800) 733-9267, (See order form at the end of this bulletin.)
- *Elevator Industry Field Employees' Safety Handbook*, 2005, Elevator World, (800) 730-5093, [safety.elevator-world.com](http://safety.elevator-world.com)

Candidates are responsible for bringing their own references to the examination center. Reference materials must be bound,

and may be highlighted, underlined, annotated, and/or indexed prior to the examination session. However, references may not be written in during the examination session. Any candidate caught writing in the references during the examination will have the references confiscated and will be reported to the department. Furthermore, candidates are not permitted to bring in any additional papers (loose or attached) with their approved references. Any additional materials will be removed from the references and confiscated. References may be tabbed/indexed with permanent tabs only. Temporary tabs, such as Post-It notes, are not allowed and must be removed from the reference before the examination begins.

### GS-13 Framing

# of Questions	% Required to Pass	Time Allowed
60	75% (45 points)	180 Minutes

#### CONTENT OUTLINE

Subject Area	# of Items
Estimating and Plan Reading	9
Layout	7
Walls	14
Floors and Stairs	13
Roofs	12
OSHA Safety	5

#### REFERENCE LIST

The reference materials listed below were used to prepare the questions for this examination. The examination may also contain questions based on trade knowledge or general industry practices. **Except for Code books**, you can base your answers on later editions of references as they become available. For Code questions, the examinations will be based **only** on the edition of the Code book that is listed.

Candidates may use a silent, non-printing, non-programmable calculator in the examination center. Candidates will also be provided with a magnifying glass upon request.

This examination is OPEN BOOK.

*The following reference materials are allowed in the examination center:*

- *New Mexico Commercial Building Code* (NMAC 14.7.2), 2006, [www.nmcpr.state.nm.us/NMAC](http://www.nmcpr.state.nm.us/NMAC), (505) 476-4700
- *New Mexico Residential Building Code* (NMAC 14.7.3), 2006, [www.nmcpr.state.nm.us/NMAC](http://www.nmcpr.state.nm.us/NMAC), (505) 476-4700
- *International Building Code*, 2006, International Code Council, (800) 786-4452, [www.iccsafe.org](http://www.iccsafe.org)  
Beginning July 1, 2010 test questions are to be answered based on either the 2006 or the 2009 editions of the code; beginning January 1, 2011 test questions are to be answered based only on the 2009 edition of the code.
- *International Residential Code for One- and Two-Family Dwellings*, 2006, International Code Council, (800) 786-4452, [www.iccsafe.org](http://www.iccsafe.org) (800) 786-4452, [www.iccsafe.org](http://www.iccsafe.org)  
Beginning July 1, 2010 test questions are to be answered based on either the 2006 or the 2009 editions of the code; beginning



January 1, 2011 test questions are to be answered based only on the 2009 edition of the code.

- *Carpentry and Building Construction*, John L. Feirer and Mark D. Feirer, 2010, Glencoe-McGraw-Hill, (800) 334-7344, [www.glencoe.com](http://www.glencoe.com), ISBN 0-07-822702-X
- *Code of Federal Regulations - 29 CFR Part 1926 Revised as of 2008 or later* (OSHA), Superintendent of Documents, (888) 293-6498, [www.osha.gov](http://www.osha.gov) -OR- *Code of Federal Regulations - 29 CFR Part 1926 Selections as of 2008* by PSI, (800) 733-9267, (See order form at the end of this bulletin.)

Candidates are responsible for bringing their own references to the examination center. Reference materials must be bound, and may be highlighted, underlined, annotated, and/or indexed prior to the examination session. However, references may not be written in during the examination session. Any candidate caught writing in the references during the examination will have the references confiscated and will be reported to the department. Furthermore, candidates are not permitted to bring in any additional papers (loose or attached) with their approved references. Any additional materials will be removed from the references and confiscated. References may be tabbed/indexed with permanent tabs only. Temporary tabs, such as Post-It notes, are not allowed and must be removed from the reference before the examination begins.

- *New Mexico Commercial Building Code* (NMAC 14.7.2), 2006, [www.nmcpr.state.nm.us/NMAC](http://www.nmcpr.state.nm.us/NMAC), (505) 476-4700
- *New Mexico Residential Building Code* (NMAC 14.7.3), 2006, [www.nmcpr.state.nm.us/NMAC](http://www.nmcpr.state.nm.us/NMAC), (505) 476-4700
- *International Building Code*, 2006, International Code Council, (800) 786-4452, [www.iccsafe.org](http://www.iccsafe.org)  
Beginning July 1, 2010 test questions are to be answered based on either the 2006 or the 2009 editions of the code; beginning January 1, 2011 test questions are to be answered based only on the 2009 edition of the code.
- *International Residential Code for One- and Two-Family Dwellings*, 2006, International Code Council, (800) 786-4452, [www.iccsafe.org](http://www.iccsafe.org)  
Beginning July 1, 2010 test questions are to be answered based on either the 2006 or the 2009 editions of the code; beginning January 1, 2011 test questions are to be answered based only on the 2009 edition of the code.
- *Code of Federal Regulations - 29 CFR Part 1926 Revised as of 2008 or later* (OSHA), Superintendent of Documents, (888) 293-6498, [www.osha.gov](http://www.osha.gov) -OR- *Code of Federal Regulations - 29 CFR Part 1926 Selections as of 2008* by PSI, (800) 733-9267, (See order form at the end of this bulletin.)
- *Modern Masonry - Brick, Block, Stone*, Clois E. Kicklighter, 2010 (Seventh Edition), The Goodheart-Willcox Company, (800) 323-0440, [www.goodheartwillcox.com](http://www.goodheartwillcox.com), ISBN 1-56637-962-8
- *ACI 530-05 or 08 Building Code Requirements for Masonry Structures*, 2005 or 2008, American Concrete Institute, (248) 848-3700, [www.concrete.org](http://www.concrete.org)

## GS-16 Masonry

# of Questions	% Required to Pass	Time Allowed
60	75% (45 points)	180 Minutes

### CONTENT OUTLINE

Subject Area	# of Items
Estimating and Plan Reading	4
Unit Masonry	19
Mortar and Grout	16
Accessories	7
Stone	2
Tools	4
Restoration and Cleaning	4
Safety	4

### REFERENCE LIST

The reference materials listed below were used to prepare the questions for this examination. The examination may also contain questions based on trade knowledge or general industry practices. **Except for Code books**, you can base your answers on later editions of references as they become available. For Code questions, the examinations will be based only on the edition of the Code book that is listed.

Candidates may use a silent, non-printing, non-programmable calculator in the examination center. Candidates will also be provided with a magnifying glass upon request.

This examination is OPEN BOOK.

The following reference materials are allowed in the examination center:

Candidates are responsible for bringing their own references to the examination center. Reference materials must be bound, and may be highlighted, underlined, annotated, and/or indexed prior to the examination session. However, references may not be written in during the examination session. Any candidate caught writing in the references during the examination will have the references confiscated and will be reported to the department. Furthermore, candidates are not permitted to bring in any additional papers (loose or attached) with their approved references. Any additional materials will be removed from the references and confiscated. References may be tabbed/indexed with permanent tabs only. Temporary tabs, such as Post-It notes, are not allowed and must be removed from the reference before the examination begins.

## GS-21 Roofing

# of Questions	% Required to Pass	Time Allowed
60	75% (45 points)	150 Minutes

### CONTENT OUTLINE

Subject Area	# of Items
Estimating and Plan Reading	10
Surface Preparation and Planning	8
Steep and Low Slope Roofing, including BUR, Waterproofing	27
Roofing Components	9
Safety	6



## REFERENCE LIST

The reference materials listed below were used to prepare the questions for this examination. The examination may also contain questions based on trade knowledge or general industry practices. **Except for Code books**, you can base your answers on later editions of references as they become available. For Code questions, the examinations will be based **only** on the edition of the Code book that is listed.

Candidates may use a silent, non-printing, non-programmable calculator in the examination center. Candidates will also be provided with a magnifying glass upon request.

This examination is OPEN BOOK.

*The following reference materials are allowed in the examination center:*

- *Code of Federal Regulations - 29 CFR Part 1926 Revised as of 2008 or later (OSHA), Superintendent of Documents, (888) 293-6498, [www.osha.gov](http://www.osha.gov) -OR- Code of Federal Regulations - 29 CFR Part 1926 Selections as of 2008 by PSI, (800) 733-9267, (See order form at the end of this bulletin.)*
- *New Mexico Commercial Building Code (NMAC 14.7.2), 2006, [www.nmcpr.state.nm.us/NMAC](http://www.nmcpr.state.nm.us/NMAC), (505) 476-4700*
- *New Mexico Residential Building Code (NMAC 14.7.3), 2006, [www.nmcpr.state.nm.us/NMAC](http://www.nmcpr.state.nm.us/NMAC), (505) 476-4700*
- *International Building Code, 2006, International Code Council, (800) 786-4452, [www.iccsafe.org](http://www.iccsafe.org)  
Beginning July 1, 2010 test questions are to be answered based on either the 2006 or the 2009 editions of the code; beginning January 1, 2011 test questions are to be answered based only on the 2009 edition of the code.*
- *International Residential Code for One- and Two-Family Dwellings, 2006, International Code Council, (800) 786-4452, [www.iccsafe.org](http://www.iccsafe.org) (800) 786-4452, [www.iccsafe.org](http://www.iccsafe.org)  
Beginning July 1, 2010 test questions are to be answered based on either the 2006 or the 2009 editions of the code; beginning January 1, 2011 test questions are to be answered based only on the 2009 edition of the code.*
- *Roofing Construction and Estimating, Daniel Atcheson, 1995, Craftsman Book Company, (800) 829-8123, [www.craftsman-book.com/products](http://www.craftsman-book.com/products), ISBN 1-57218-007-2*
- *NRCA Roofing Manual: Steep Slope Roof Systems, 2009, The National Roofing Contractors Association, (847) 299-9070, [www.nrca.net](http://www.nrca.net)*
- *NRCA Roofing Manual: Membrane Roofing Systems, 2007, The National Roofing Contractors Association, (847) 299-9070, [www.nrca.net](http://www.nrca.net)*

Candidates are responsible for bringing their own references to the examination center. Reference materials must be bound, and may be highlighted, underlined, annotated, and/or indexed prior to the examination session. However, references may not be written in during the examination session. Any candidate caught writing in the references during the examination will have the references confiscated and will be reported to the department. Furthermore, candidates are not permitted to bring in any additional papers (loose or attached) with their approved references. Any additional materials will be removed from the references and confiscated. References may be tabbed/indexed with permanent tabs only. Temporary tabs, such as Post-It notes, are not allowed and must be removed from the reference before the examination begins.

## GS-24 Structural Steel Erection

# of Questions	% Required to Pass	Time Allowed
40	75% (30 points)	120 Minutes

### CONTENT OUTLINE

Subject Area	# of Items
Materials	10
Rigging	8
Steel Erection	10
Attachment	8
Safety	4

### REFERENCE LIST

The reference materials listed below were used to prepare the questions for this examination. The examination may also contain questions based on trade knowledge or general industry practices. **Except for Code books**, you can base your answers on later editions of references as they become available. For Code questions, the examinations will be based **only** on the edition of the Code book that is listed.

Candidates may use a silent, non-printing, non-programmable calculator in the examination center. Candidates will also be provided with a magnifying glass upon request.

This examination is OPEN BOOK.

*The following reference materials are allowed in the examination center:*

- *Handbook of Rigging for Construction and Industrial Operations, W.E. Rossnagel, 1988, 5<sup>th</sup> edition, McGraw-Hill, (800) 262-4729, [www.books.mcgraw-hill.com](http://www.books.mcgraw-hill.com), ISBN 0071493018*
- *Handling and Erection of Steel Joists and Joist Girders, 2006, 2nd Edition, Steel Joist Institute, (843) 626-1995, [www.steeljoist.org/publications](http://www.steeljoist.org/publications)*
- *Principles and Practices of Commercial Construction, Cameron K. Andres and Ronald C. Smith, 2004, 7<sup>th</sup> Edition, Pearson Education, Inc., [www.phccatalog.pearson.com](http://www.phccatalog.pearson.com), ISBN 0-13-048292-7*
- *Code of Federal Regulations - 29 CFR Part 1926 Revised as of 2008 or later (OSHA), Superintendent of Documents, (888) 293-6498, [www.osha.gov](http://www.osha.gov) -OR- Code of Federal Regulations - 29 CFR Part 1926 Selections as of 2008 by PSI, (800) 733-9267, (See order form at the end of this bulletin.)*
- *SDI Manual of Construction with Steel Deck, 2006, 2nd Edition, Steel Deck Institute, (847) 458-4647, [www.sdi.org](http://www.sdi.org)*

Candidates are responsible for bringing their own references to the examination center. Reference materials must be bound, and may be highlighted, underlined, annotated, and/or indexed prior to the examination session. However, references may not be written in during the examination session. Any candidate caught writing in the references during the examination will have the references confiscated and will be reported to the department. Furthermore, candidates are not permitted to



bring in any additional papers (loose or attached) with their approved references. Any additional materials will be removed from the references and confiscated. References may be tabbed/indexed with permanent tabs only. Temporary tabs, such as Post-It notes, are not allowed and must be removed from the reference before the examination begins.

## GS-25 Swimming Pools

# of Questions	% Required to Pass	Time Allowed
50	75% (38 points)	150 Minutes

### CONTENT OUTLINE

Subject Area	# of Items
Plan Reading and Estimating	3
Sitework and Excavating	9
Forming and Reinforcing	9
Concrete	8
Shotcrete	8
Pool Equipment, Including ADA (No Plumbing or Electric)	8
Safety, Including CFR, Pool and Security Fencing	5

### REFERENCE LIST

The reference materials listed below were used to prepare the questions for this examination. The examination may also contain questions based on trade knowledge or general industry practices. **Except for Code books**, you can base your answers on later editions of references as they become available. For Code questions, the examinations will be based **only** on the edition of the Code book that is listed.

Candidates may use a silent, non-printing, non-programmable calculator in the examination center. Candidates will also be provided with a magnifying glass upon request.

This examination is OPEN BOOK.

*The following reference materials are allowed in the examination center:*

- *New Mexico Commercial Building Code* (NMAC 14.7.2), 2006, [www.nmcpr.state.nm.us/NMAC](http://www.nmcpr.state.nm.us/NMAC), (505) 476-4700
- *New Mexico Residential Building Code* (NMAC 14.7.3), 2006, [www.nmcpr.state.nm.us/NMAC](http://www.nmcpr.state.nm.us/NMAC), (505) 476-4700
- *International Building Code*, 2006, International Code Council, (800) 786-4452, [www.iccsafe.org](http://www.iccsafe.org)  
Beginning July 1, 2010 test questions are to be answered based on either the 2006 or the 2009 editions of the code; beginning January 1, 2011 test questions are to be answered based only on the 2009 edition of the code.
- *International Residential Code for One- and Two-Family Dwellings*, 2006, International Code Council, (800) 786-4452, [www.iccsafe.org](http://www.iccsafe.org) (800) 786-4452, [www.iccsafe.org](http://www.iccsafe.org)  
Beginning July 1, 2010 test questions are to be answered based on either the 2006 or the 2009 editions of the code; beginning January 1, 2011 test questions are to be answered based only on the 2009 edition of the code.
- *Code of Federal Regulations - 29 CFR Part 1926 Revised as of 2008 or later* (OSHA), Superintendent of Documents, (888) 293-6498, [www.osha.gov](http://www.osha.gov) **-OR-** Code of Federal

Regulations - 29 CFR Part 1926 Selections as of 2008 by PSI, (800) 733-9267, (See order form at the end of this bulletin.)

- *Certified Pool-Spa Operators Handbook*, 2006, National Swimming Pool Foundation, 10803 Gulfdale Suite 300, San Antonio, TX 78216, (516) 623-3447, [www.nspf.com](http://www.nspf.com)
- *Design and Control of Concrete Mixtures*, Steven H. Kosmatka and William C. Panarese, 2002, 14th Edition, Portland Cement Association, (847) 966-6200, [www.cement.org](http://www.cement.org), ISBN 0-893122173
- *Placing Reinforcing Bars*, 2005, 8th Edition, Concrete Reinforcing Steel Institute, (800) 328-6306, [www.crsi.org](http://www.crsi.org)
- *Guide to Shotcrete*, 1995, American Concrete Institute, (248) 848-3700, [www.aci-int.org](http://www.aci-int.org)
- *Pipe and Excavation Contracting*, Dave Roberts, 1987, Craftsman Book Company, (800) 829-8123, [www.craftsman-book.com/products](http://www.craftsman-book.com/products), ISBN 0-934041-22-9

Candidates are responsible for bringing their own references to the examination center. Reference materials must be bound, and may be highlighted, underlined, annotated, and/or indexed prior to the examination session. However, references may not be written in during the examination session. Any candidate caught writing in the references during the examination will have the references confiscated and will be reported to the department. Furthermore, candidates are not permitted to bring in any additional papers (loose or attached) with their approved references. Any additional materials will be removed from the references and confiscated. References may be tabbed/indexed with permanent tabs only. Temporary tabs, such as Post-It notes, are not allowed and must be removed from the reference before the examination begins.

## GS-30 Plastering, Stucco and Lathing

# of Questions	% Required to Pass	Time Allowed
40	75% (30 points)	120 Minutes

### CONTENT OUTLINE

Subject Area	# of Items
Estimating and Plan Reading	4
Surface Preparation	6
Materials	7
Installation	9
E.I.F.S.	5
Tools	5
Safety	4

### REFERENCE LIST

The reference materials listed below were used to prepare the questions for this examination. The examination may also contain questions based on trade knowledge or general industry practices. **Except for Code books**, you can base your answers on later editions of references as they become available. For Code questions, the examinations will be based **only** on the edition of the Code book that is listed.

Candidates may use a silent, non-printing, non-programmable calculator in the examination center. Candidates will also be provided with a magnifying glass upon request.



This examination is OPEN BOOK.

The following reference materials are allowed in the examination center:

- *New Mexico Commercial Building Code* (NMAC 14.7.2), 2006, www.nmcpr.state.nm.us/NMAC, (505) 476-4700
- *New Mexico Residential Building Code* (NMAC 14.7.3), 2006, www.nmcpr.state.nm.us/NMAC, (505) 476-4700
- *International Building Code*, 2006, International Code Council, (800) 786-4452, [www.iccsafe.org](http://www.iccsafe.org)  
Beginning July 1, 2010 test questions are to be answered based on either the 2006 or the 2009 editions of the code; beginning January 1, 2011 test questions are to be answered based only on the 2009 edition of the code.
- *International Residential Code for One- and Two-Family Dwellings*, 2006, International Code Council, (800) 786-4452, [www.iccsafe.org](http://www.iccsafe.org)  
Beginning July 1, 2010 test questions are to be answered based on either the 2006 or the 2009 editions of the code; beginning January 1, 2011 test questions are to be answered based only on the 2009 edition of the code.
- *Code of Federal Regulations - 29 CFR Part 1926 Revised as of 2008 or later* (OSHA), Superintendent of Documents, (888) 293-6498, www.osha.gov -OR- *Code of Federal Regulations - 29 CFR Part 1926 Selections as of 2008* by PSI, (800) 733-9267, (See order form at the end of this bulletin.)
- *Standard Specifications for Installation of Lathing and Furring to Receive Interior and Exterior Portland Cement-Based Plaster - ASTM C 1063*, 2003, American Society for Testing and Materials, (610) 832-9585, [www.astm.org](http://www.astm.org)
- *Standard Specification for Plastic (Stucco) Cement - ASTM C 1328*, 2005, American Society for Testing and Materials, (610) 832-9585, [www.astm.org](http://www.astm.org)
- *Standard Specification for Installation of Steel Framing Members to Receive Screw-Attached Gypsum Panel Products - ASTM C 754*, 2004, American Society for Testing and Materials, (610) 832-9585, [www.astm.org](http://www.astm.org)
- *Standard Specification for Installation of Interior Lathing and Furring - ASTM C 841*, 2003, American Society for Testing and Materials, (610) 832-9585, [www.astm.org](http://www.astm.org)
- *Standard Specification for Application of Interior Gypsum Plaster - ASTM C 842*, 2005, American Society for Testing and Materials, (610) 832-9585, [www.astm.org](http://www.astm.org)
- *Standard Specification for Application of Portland Cement-Based Plaster - ASTM C 926*, 2006, American Society for Testing and Materials, (610) 832-9585, [www.astm.org](http://www.astm.org)
- *Standard Practice for Application of Class PB Exterior Insulation and Finish Systems - ASTM C 1397*, 2005, American Society for Testing and Materials, (610) 832-9585, [www.astm.org](http://www.astm.org)
- *Standard Guide for Use of Joint Sealants with Exterior Insulation and Finish Systems (EIFS) - ASME C 1481*, 2006, American Society for Testing and Materials, (610) 832-9585, [www.astm.org](http://www.astm.org)
- *Standard Practice for Application of Exterior Insulation and Finish Systems Class PI - ASME C 1535*, 2005, American Society for Testing and Materials, (610) 832-9585, [www.astm.org](http://www.astm.org)
- *Gypsum Construction Handbook, 2009 Edition*, Publisher-United States Gypsum Company (USG), 125 S. Franklin Street, Chicago, IL 60606, Phone (800) 874-4968, URL-<http://www.usg.com>, ISBN: 0-9636862-2-4
- *Portland Cement Plaster/Stucco Manual*, 2003, Portland Cement Association, (847) 966-6200, www.cement.org, ISBN 0-89312-046-4

Candidates are responsible for bringing their own references to the examination center. Reference materials must be bound, and may be highlighted, underlined, annotated, and/or indexed prior to the examination session. However, references may not be written in during the examination session. Any candidate caught writing in the references during the examination will have the references confiscated and will be reported to the department. Furthermore, candidates are not permitted to bring in any additional papers (loose or attached) with their approved references. Any additional materials will be removed from the references and confiscated. References may be tabbed/indexed with permanent tabs only. Temporary tabs, such as Post-It notes, are not allowed and must be removed from the reference before the examination begins.

### MM-1 Plumbing

# of Questions	% Required to Pass	Time Allowed
100	75% (75 points)	240 Minutes

### CONTENT OUTLINE

Subject Area	# of Items
Drainage Waste and Vents	25
Water Supply Systems	8
Backflow Prevention	7
Storm Drainage Systems	4
Plumbing Fixtures, Including Water Heaters	10
General Knowledge and General Regulations	12
Interceptors and Traps	9
Isometric Analysis	10
Hydronics	5
Septic and Sewer	6
Fuel Dispensing Stations	4

### REFERENCE LIST

The reference materials listed below were used to prepare the questions for this examination. The examination may also contain questions based on trade knowledge or general industry practices. **Except for Code books**, you can base your answers on later editions of references as they become available. For Code questions, the examinations will be based **only** on the edition of the Code book that is listed.

Candidates may use a silent, non-printing, non-programmable calculator in the examination center. Candidates will also be provided with a magnifying glass upon request.

This examination is OPEN BOOK.

The following reference materials are allowed in the examination center:

- *New Mexico Plumbing Code* (NMAC 14.8.2), 2006, www.nmcpr.state.nm.us/NMAC, (505) 476-4700
- *Uniform Plumbing Code*, 2006, International Association of Plumbing and Mechanical Officials (IAPMO), (800) 854-2766, [www.iapmo.org](http://www.iapmo.org)  
Beginning July 1, 2010 test questions are to be answered based on either the 2006 or the 2009 editions of the code; beginning



January 1, 2011 test questions are to be answered based only on the 2009 edition of the code.

- *IPT's Pipe Trades Handbook*, Robert A. Lee, 1991, IPT Publishing and Training, Ltd., (888) 808-6763, [www.iptbooks.com](http://www.iptbooks.com), ISBN 0-920855-18-0
- *New Mexico Mechanical Code* (NMAC 14.9.2), 2006, [www.nmcpr.state.nm.us/NMAC](http://www.nmcpr.state.nm.us/NMAC), (505) 476-4700
- *New Mexico Liquid Waste Disposal Regulations* (NMAC 20.7.3), 2005, [www.nmcpr.state.nm.us/NMAC](http://www.nmcpr.state.nm.us/NMAC), (505) 476-4700

The following reference materials are not allowed in the examination center:

- *Mathematics for Plumbers and Pipefitters*, 7th Edition, 2008, Delmar/Thomson Learning, (800) 347-7707, [www.delmarlearning.com](http://www.delmarlearning.com), ISBN 1401821103
- *NFPA 30A - Code for Motor Fuel Dispensing Facilities and Repair Garages*, 2003, National Fire Protection Association (NFPA), (800) 344-3555, [www.nfpa.org](http://www.nfpa.org)
- *Code of Federal Regulations - 29 CFR Part 1926 Revised as of 2008 or later* (OSHA), Superintendent of Documents, (888) 293-6498, [www.osha.gov](http://www.osha.gov) -OR- *Code of Federal Regulations - 29 CFR Part 1926 Selections as of 2008* by PSI, (800) 733-9267, (See order form at the end of this bulletin.)

Candidates are responsible for bringing their own references to the examination center. Reference materials must be bound, and may be highlighted, underlined, **annotated**, and/or indexed prior to the examination session. However, references may not be written in during the examination session. Any candidate caught writing in the references during the examination will have the references confiscated and will be reported to the department. Furthermore, candidates are not permitted to bring in any additional papers (loose or attached) with their approved references. Any additional materials will be removed from the references and confiscated. References may be tabbed/indexed with permanent tabs only. Temporary tabs, such as Post-It notes, are not allowed and must be removed from the reference before the examination begins.

## MM-2 Natural Gas Fitting

# of Questions	% Required to Pass	Time Allowed
100	75% (75 points)	240 Minutes

### CONTENT OUTLINE

Subject Area	# of Items
General Knowledge and Principles	16
Piping	19
Gas Sizing	13
Controls and Testing	8
Appliances	15
Combustion Air	9
Chimneys, Flues, and Vents	10
Heating Systems	10

## REFERENCE LIST

The reference materials listed below were used to prepare the questions for this examination. The examination may also contain questions based on trade knowledge or general industry practices. **Except for Code books**, you can base your answers on later editions of references as they become available. For Code questions, the examinations will be based **only** on the edition of the Code book that is listed.

Candidates may use a silent, non-printing, non-programmable calculator in the examination center. Candidates will also be provided with a magnifying glass upon request.

This examination is OPEN BOOK.

The following reference materials are allowed in the examination center:

- *Uniform Mechanical Code*, 2006, International Association of Plumbing and Mechanical Officials (IAPMO), (800) 854-2766, [www.iapmo.org](http://www.iapmo.org)
- *Modern Refrigeration and Air Conditioning*, 2004, 18th Edition, The Goodheart-Willcox Company, (800) 323-0440, [www.goodheartwillcox.com](http://www.goodheartwillcox.com), ISBN 1566377242
- *IPT's Pipe Trades Handbook*, Robert A. Lee, 1991, IPT Publishing and Training, Ltd., (888) 808-6763, [www.iptbooks.com](http://www.iptbooks.com), ISBN 0-920855-18-0
- *Uniform Plumbing Code*, 2006, International Association of Plumbing and Mechanical Officials (IAPMO), (800) 854-2766, [www.iapmo.org](http://www.iapmo.org)
- *New Mexico Plumbing Code* (NMAC 14.8.2), 2006, [www.nmcpr.state.nm.us/NMAC](http://www.nmcpr.state.nm.us/NMAC), (505) 476-4700
- *New Mexico Mechanical Code* (NMAC 14.9.2), 2006, [www.nmcpr.state.nm.us/NMAC](http://www.nmcpr.state.nm.us/NMAC), (505) 476-4700

Candidates are responsible for bringing their own references to the examination center. Reference materials must be bound, and may be highlighted, underlined, **annotated**, and/or indexed prior to the examination session. However, references may not be written in during the examination session. Any candidate caught writing in the references during the examination will have the references confiscated and will be reported to the department. Furthermore, candidates are not permitted to bring in any additional papers (loose or attached) with their approved references. Any additional materials will be removed from the references and confiscated. References may be tabbed/indexed with permanent tabs only. Temporary tabs, such as Post-It notes, are not allowed and must be removed from the reference before the examination begins.

## MM-3 Heat, Vent and Air Conditioning

# of Questions	% Required to Pass	Time Allowed
100	75% (75 points)	240 Minutes

### CONTENT OUTLINE

Subject Area	# of Items
Motors, Controls, and Low Voltage Wiring	20
Piping	10
Heating and Cooling General Knowledge	20
Heating and Cooling Equipment and Components	15





Refrigerants and Refrigeration	15
Duct Work, Ventilation, and Exhaust	20

90	75% (68 points)	220 Minutes
----	-----------------	-------------

### REFERENCE LIST

The reference materials listed below were used to prepare the questions for this examination. The examination may also contain questions based on trade knowledge or general industry practices. **Except for Code books**, you can base your answers on later editions of references as they become available. For Code questions, the examinations will be based **only** on the edition of the Code book that is listed.

Candidates may use a silent, non-printing, non-programmable calculator in the examination center. Candidates will also be provided with a magnifying glass upon request.

This examination is OPEN BOOK.

*The following reference materials are allowed in the examination center:*

- *Uniform Mechanical Code*, 2006, International Association of Plumbing and Mechanical Officials (IAPMO), (800) 854-2766, [www.iapmo.org](http://www.iapmo.org)
- *Modern Refrigeration and Air Conditioning*, 2004, 18th Edition, The Goodheart-Willcox Company, (800) 323-0440, [www.goodheartwillcox.com](http://www.goodheartwillcox.com), ISBN 1566377242
- *IPT's Pipe Trades Handbook*, Robert A. Lee, 1991, IPT Publishing and Training, Ltd., (888) 808-6763, [www.iptbooks.com](http://www.iptbooks.com), ISBN 0-920855-18-0
- *New Mexico Mechanical Code* (NMAC 14.9.2), 2006, [www.nmcpr.state.nm.us/NMAC](http://www.nmcpr.state.nm.us/NMAC), (505) 476-4700
- Ductulator or other slide or wheel duct calculator
- *HVAC Duct Construction Standards, Metal and Flexible*, 2005, 3rd edition, Sheet Metal and Air Conditioning Contractors' National Association, Inc., (703) 803-2980, [www.smacna.org](http://www.smacna.org)
- Pressure and Enthalpy Charts are allowed in the examination. The charts **MUST** be clearly titled in a pre-printed fashion as "Pressure and Enthalpy Charts". The charts may be the graph type or the table type. Various publishers and manufacturer's provide these charts such as Mollier, Real Climate, and SAIMECHE.

Candidates are responsible for bringing their own references to the examination center. Reference materials must be bound, and may be highlighted, underlined, **annotated**, and/or indexed prior to the examination session. However, references may not be written in during the examination session. Any candidate caught writing in the references during the examination will have the references confiscated and will be reported to the department. Furthermore, candidates are not permitted to bring in any additional papers (loose or attached) with their approved references. Any additional materials will be removed from the references and confiscated. References may be tabbed/indexed with permanent tabs only. Temporary tabs, such as Post-It notes, are not allowed and must be removed from the reference before the examination begins.

### MM-4 Heat, Cooling, and Process Pipe

# of Questions	% Required to Pass	Time Allowed
----------------	--------------------	--------------

### CONTENT OUTLINE

Subject Area	# of Items
General Knowledge	29
Steam and Hot Water Boiler Systems	7
Process Piping and Systems	28
Fire Suppression Systems	6
Controls and Components	15
Combustion Air and Venting	5

### REFERENCE LIST

The reference materials listed below were used to prepare the questions for this examination. The examination may also contain questions based on trade knowledge or general industry practices. **Except for Code books**, you can base your answers on later editions of references as they become available. For Code questions, the examinations will be based **only** on the edition of the Code book that is listed.

Candidates may use a silent, non-printing, non-programmable calculator in the examination center. Candidates will also be provided with a magnifying glass upon request.

This examination is OPEN BOOK.

*The following reference materials are allowed in the examination center:*

- *New Mexico Mechanical Code* (NMAC 14.9.2), 2006, [www.nmcpr.state.nm.us/NMAC](http://www.nmcpr.state.nm.us/NMAC), (505) 476-4700
- *Modern Refrigeration and Air Conditioning*, 2004, 18th Edition, The Goodheart-Willcox Company, (800) 323-0440, [www.goodheartwillcox.com](http://www.goodheartwillcox.com), ISBN 1566377242
- *Uniform Mechanical Code*, 2006, International Association of Plumbing and Mechanical Officials (IAPMO), (800) 854-2766, [www.iapmo.org](http://www.iapmo.org)
- *New Mexico Boiler Rules and Regulations* (NMAC 14.9.4), 2005, [www.nmcpr.state.nm.us/NMAC](http://www.nmcpr.state.nm.us/NMAC), (505) 476-4700
- *NFPA 13 - Installation of Sprinkler Systems*, 2007, National Fire Protection Association (NFPA), (800) 344-3555, [www.nfpa.org](http://www.nfpa.org)
- *NFPA 17 - Standard for Dry Chemical Extinguishing Systems*, 2009, National Fire Protection Association (NFPA), (800) 344-3555, [www.nfpa.org](http://www.nfpa.org)
- *IPT's Pipe Trades Handbook*, Robert A. Lee, 1991, IPT Publishing and Training, Ltd., (888) 808-6763, [www.iptbooks.com](http://www.iptbooks.com), ISBN 0-920855-18-0

*The following reference materials are not allowed in the examination center:*

- *New Mexico Plumbing Code* (NMAC 14.8.2), 2006, [www.nmcpr.state.nm.us/NMAC](http://www.nmcpr.state.nm.us/NMAC), (505) 476-4700
- *Uniform Plumbing Code*, 2006, International Association of Plumbing and Mechanical Officials (IAPMO), (800) 854-2766, [www.iapmo.org](http://www.iapmo.org)
- *Low Pressure Boilers*, Frederick M. Steingress, 2009, 3rd edition, American Technical Publishers, Inc., (800) 323-3471, [www.go2atp.com](http://www.go2atp.com), ISBN 0-8269-4350-0
- *NFPA 31 - Standard for the Installation of Oil Burning Equipment*, 2001 Edition, National Fire Protection Association (NFPA), (800) 344-3555, [www.nfpa.org](http://www.nfpa.org)



- Pressure and Enthalpy Charts are allowed in the examination. The charts MUST be clearly titled in a pre-printed fashion as "Pressure and Enthalpy Charts". The charts may be the graph type or the table type. Various publishers and manufacturer's provide these charts such as Mollier, Real Climate, and SAIMECHE.

Candidates are responsible for bringing their own references to the examination center. Reference materials must be bound, and may be highlighted, underlined, annotated, and/or indexed prior to the examination session. However, references may not be written in during the examination session. Any candidate caught writing in the references during the examination will have the references confiscated and will be reported to the department. Furthermore, candidates are not permitted to bring in any additional papers (loose or attached) with their approved references. Any additional materials will be removed from the references and confiscated. References may be tabbed/indexed with permanent tabs only. Temporary tabs, such as Post-It notes, are not allowed and must be removed from the reference before the examination begins.

### MS-3 Cesspools, Septic Tanks and Sewers

# of Questions	% Required to Pass	Time Allowed
50	75% (38 points)	120 Minutes

#### CONTENT OUTLINE

Subject Area	# of Items
General Knowledge	5
Installation and Materials	15
Septic Tanks	12
Disposal Absorption Fields	10
Building Sewers	4
Alternative Disposal	4

#### REFERENCE LIST

The reference materials listed below were used to prepare the questions for this examination. The examination may also contain questions based on trade knowledge or general industry practices. **Except for Code books**, you can base your answers on later editions of references as they become available. For Code questions, the examinations will be based **only** on the edition of the Code book that is listed.

Candidates may use a silent, non-printing, non-programmable calculator in the examination center. Candidates will also be provided with a magnifying glass upon request. This examination is OPEN BOOK.

*The following reference materials are allowed in the examination center:*

- New Mexico Liquid Waste Disposal Regulations* (NMAC 20.7.3), 2005, [www.nmcpr.state.nm.us/NMAC](http://www.nmcpr.state.nm.us/NMAC), (505) 476-4700
- Uniform Plumbing Code*, 2006, International Association of Plumbing and Mechanical Officials (IAPMO), (800) 854-2766, [www.iapmo.org](http://www.iapmo.org)

- Mathematics for Plumbers and Pipefitters*, 7th Edition, 2008, Delmar/Thomson Learning, (800) 347-7707, [www.delmarlearning.com](http://www.delmarlearning.com), ISBN 1401821103

Candidates are responsible for bringing their own references to the examination center. Reference materials must be bound, and may be highlighted, underlined, annotated, and/or indexed prior to the examination session. However, references may not be written in during the examination session. Any candidate caught writing in the references during the examination will have the references confiscated and will be reported to the department. Furthermore, candidates are not permitted to bring in any additional papers (loose or attached) with their approved references. Any additional materials will be removed from the references and confiscated. References may be tabbed/indexed with permanent tabs only. Temporary tabs, such as Post-It notes, are not allowed and must be removed from the reference before the examination begins.

### MS-6 Lawn Sprinklers

# of Questions	% Required to Pass	Time Allowed
50	75% (38 points)	120 Minutes

#### CONTENT OUTLINE

Subject Area	# of Items
General Knowledge	10
Design	9
Materials	5
Controls and Wiring	9
Excavation	4
Pumps	3
Water Supply	5
Sprinkler Heads	5

#### REFERENCE LIST

The reference materials listed below were used to prepare the questions for this examination. The examination may also contain questions based on trade knowledge or general industry practices. **Except for Code books**, you can base your answers on later editions of references as they become available. For Code questions, the examinations will be based **only** on the edition of the Code book that is listed.

Candidates may use a silent, non-printing, non-programmable calculator in the examination center. Candidates will also be provided with a magnifying glass upon request.

This examination is OPEN BOOK.

*The following reference material is allowed in the examination center:*

- Simplified Irrigation Design*, Pete Melby, 1995, 2<sup>nd</sup> edition, John Wiley and Sons, Inc., (201) 748-6000, [www.wiley.com](http://www.wiley.com), ISBN 0-471-28622-2

Candidates are responsible for bringing their own references to the examination center. Reference materials must be bound, and may be highlighted, underlined, annotated, and/or indexed prior to the examination session. However, references may not



be written in during the examination session. Any candidate caught writing in the references during the examination will have the references confiscated and will be reported to the department. Furthermore, candidates are not permitted to bring in any additional papers (loose or attached) with their approved references. Any additional materials will be removed from the references and confiscated. References may be tabbed/indexed with permanent tabs only. Temporary tabs, such as Post-It notes, are not allowed and must be removed from the reference before the examination begins.

## MS-12 Fire Protection Systems

# of Questions	% Required to Pass	Time Allowed
80	75% (60 points)	120 Minutes

### CONTENT OUTLINE

Subject Area	# of Items
Backflow Prevention	5
Hydraulic Calculations and Design	6
Residential Systems	5
Firepumps and Standpipes	8
Sprinkler Systems	15
Water Supply, Storage, and Distribution	5
General and Code Knowledge	18
Materials and Methods	8
Testing and Inspections (NFPA 25)	10

### REFERENCE LIST

The reference materials listed below were used to prepare the questions for this examination. The examination may also contain questions based on trade knowledge or general industry practices. **Except for Code books**, you can base your answers on later editions of references as they become available. For Code questions, the examinations will be based **only** on the edition of the Code book that is listed.

Candidates may use a silent, non-printing, non-programmable calculator in the examination center. Candidates will also be provided with a magnifying glass upon request.

This examination is OPEN BOOK.

*The following reference materials are allowed in the examination center:*

- *NFPA 13 - Installation of Sprinkler Systems*, 2007, National Fire Protection Association (NFPA), (800) 344-3555, [www.nfpa.org](http://www.nfpa.org)
- *NFPA 101 - Life Safety Code*, 2009, National Fire Protection Association (NFPA), (800) 344-3555, [www.nfpa.org](http://www.nfpa.org)
- *NFPA 25 - Inspection, Testing, and Maintenance of Water Based Fire Protection Systems*, 2008, National Fire Protection Association (NFPA), (800) 344-3555, [www.nfpa.org](http://www.nfpa.org)
- *NFPA 13R - Sprinkler Systems for Residential Occupancies Up To and Including Four Stories in Height*, 2002, National Fire Protection Association (NFPA), (800) 344-3555, [www.nfpa.org](http://www.nfpa.org)

- *NFPA 15 - Water Spray Fixed Systems for Fire Protection*, 2009, National Fire Protection Association (NFPA), (800) 344-3555, [www.nfpa.org](http://www.nfpa.org)
- *NFPA 14 - Installation of Standpipe, Private Hydrant, and Hose*, 2007, National Fire Protection Association (NFPA), (800) 344-3555, [www.nfpa.org](http://www.nfpa.org)
- *NFPA 20 - Standard for the Installation of Stationary Pumps for Fire Protection*, 2007, National Fire Protection Association (NFPA), (800) 344-3555, [www.nfpa.org](http://www.nfpa.org)
- *NFPA 13D - Sprinklers, One- and Two-Family Dwellings and Manufactured Housing*, 2002, National Fire Protection Association (NFPA), (800) 344-3555, [www.nfpa.org](http://www.nfpa.org)
- *Uniform Plumbing Code*, 2006, International Association of Plumbing and Mechanical Officials (IAPMO), (800) 854-2766, [www.iapmo.org](http://www.iapmo.org)
- *NFPA 22: Standard for Water Tanks for Private Fire Protection*, 2008, National Fire Protection Association (NFPA), (800) 344-3555, [www.nfpa.org](http://www.nfpa.org)
- *NFPA 24: Standard for the Installation of Private Fire Service Mains and Their Appurtenances*, 2007, National Fire Protection Association (NFPA), (800) 344-3555, [www.nfpa.org](http://www.nfpa.org)

Candidates are responsible for bringing their own references to the examination center. Reference materials must be bound, and may be highlighted, underlined, **annotated**, and/or indexed prior to the examination session. However, references may not be written in during the examination session. Any candidate caught writing in the references during the examination will have the references confiscated and will be reported to the department. Furthermore, candidates are not permitted to bring in any additional papers (loose or attached) with their approved references. Any additional materials will be removed from the references and confiscated. References may be tabbed/indexed with permanent tabs only. Temporary tabs, such as Post-It notes, are not allowed and must be removed from the reference before the examination begins.

## MS-14 Dry Chemical Fire Protection

# of Questions	% Required to Pass	Time Allowed
50	75% (38 points)	90 Minutes

### CONTENT OUTLINE

Subject Area	# of Items
Clean Agents And Alternative Systems	17
Foam Systems	5
Wet Chemical Systems	8
Dry Chemical Systems	6
Carbon Dioxide Systems	2
Portable Fire Extinguishers	4
Commercial Kitchen Equipment	8

### REFERENCE LIST

The reference materials listed below were used to prepare the questions for this examination. The examination may also contain questions based on trade knowledge or general industry practices. **Except for Code books**, you can base your answers on later editions of references as they become available. For Code questions, the examinations will be based **only** on the edition of the Code book that is listed.



Candidates may use a silent, non-printing, non-programmable calculator in the examination center. Candidates will also be provided with a magnifying glass upon request.

This examination is OPEN BOOK.

*The following reference materials are allowed in the examination center:*

- *NFPA 72 - National Fire Alarm Code, 2007, National Fire Protection Association (NFPA), (800) 344-3555, [www.nfpa.org](http://www.nfpa.org)*
- *NFPA 10 - Standard for Portable Fire Extinguishers, 2007, National Fire Protection Association (NFPA), (800) 344-3555, [www.nfpa.org](http://www.nfpa.org)*
- *NFPA 11 - Standard for Low-Expansion Foam, 2005, National Fire Protection Association (NFPA), (800) 344-3555, [www.nfpa.org](http://www.nfpa.org)*
- *NFPA 17 - Standard for Dry Chemical Extinguishing Systems, 2009, National Fire Protection Association (NFPA), (800) 344-3555, [www.nfpa.org](http://www.nfpa.org)*
- *NFPA 17A - Standard for Wet Chemical Extinguishing Systems, 2009, National Fire Protection Association (NFPA), (800) 344-3555, [www.nfpa.org](http://www.nfpa.org)*
- *NFPA 96 - Standard for Ventilation Control and Fire Protection of Commercial Cooking Operations, 2004, National Fire Protection Association (NFPA), (800) 344-3555, [www.nfpa.org](http://www.nfpa.org)*
- *Uniform Plumbing Code, 2006, International Association of Plumbing and Mechanical Officials (IAPMO), (800) 854-2766, [www.iapmo.org](http://www.iapmo.org)*
- *Uniform Mechanical Code, 2006, International Association of Plumbing and Mechanical Officials (IAPMO), (800) 854-2766, [www.iapmo.org](http://www.iapmo.org)*
- *NFPA 2001: Standard for Clean Agent Fire Extinguishing Systems, 2008, National Fire Protection Association (NFPA), (800) 344-3555, [www.nfpa.org](http://www.nfpa.org)*
- *NFPA 12: Standard on Carbon Dioxide Extinguishing Systems, 2008, National Fire Protection Association (NFPA), (800) 344-3555, [www.nfpa.org](http://www.nfpa.org)*

Candidates are responsible for bringing their own references to the examination center. Reference materials must be bound, and may be highlighted, underlined, annotated, and/or indexed prior to the examination session. However, references may not be written in during the examination session. Any candidate caught writing in the references during the examination will have the references confiscated and will be reported to the department. Furthermore, candidates are not permitted to bring in any additional papers (loose or attached) with their approved references. Any additional materials will be removed from the references and confiscated. References may be tabbed/indexed with permanent tabs only. Temporary tabs, such as Post-It notes, are not allowed and must be removed from the reference before the examination begins.



**Payment:** (MasterCard, VISA, Money Order or Cashier's Check only. Personal and company checks are not accepted.)

Credit card (MasterCard or VISA) payment accepted for phone or fax registrations only. (Check One):

MC

VISA

Card No: \_\_\_\_\_ Exp. Date: \_\_\_\_\_

Card Verification No: \_\_\_\_\_ *For your security, PSI requires you to enter the card identification number located on your credit card. The card identification number is located on the back of the card and consists of the last three digits on the signature strip.*

Cardholder Name (Print): \_\_\_\_\_ Signature: \_\_\_\_\_

7. I am faxing the Special Arrangement Request (at the end of this bulletin) and required documentation.  Yes  No

8. **Affidavit:** I certify that the information provided on this registration form (and/or telephonically to PSI) is correct. I understand that any falsification of information may result in denial of licensure. I have read and understand the examination information bulletin.

Signature: \_\_\_\_\_ Date: \_\_\_\_\_

IF YOU ARE REGISTERING BY MAIL OR FAX, SIGN AND DATE THIS REGISTRATION FORM ON THE LINES PROVIDED.

Complete and forward this registration form with the applicable examination fee to:

PSI \* ATTN: Examination Registration NM CO

3210 E Tropicana \* Las Vegas \* NV \* 89121

Fax (702) 932-2666 \* (800) 733-9267 \* TTY (800) 735-2929

[www.psiexams.com](http://www.psiexams.com)

PSI may occasionally share your information with partners who have offers of interest to you. Please uncheck this box if you do not wish PSI to share your information with these parties. Please note: PSI will never release your ID number or SSN number.



## BOOKS AND MORE ARE NOW AVAILABLE AT THE PSI ONLINE STORE!

To place an order for one or more of the following items listed, you may:

- Order online at [www.psionlinestore.com](http://www.psionlinestore.com)
- Call the PSI Online store toll-free at (866) 589-3088

Note: prices are available online at [www.psionlinestore.com](http://www.psionlinestore.com)

<input type="checkbox"/>	<a href="#"><u>Basic Business, Law and Project Management for Contractors</u></a>
<input type="checkbox"/>	<a href="#"><u>29 CFR Part 1926 Selections</u></a>
<input type="checkbox"/>	<a href="#"><u>American Electricians' Handbook</u></a>
<input type="checkbox"/>	<a href="#"><u>NFPA 70 - National Electrical Code</u></a>
<input type="checkbox"/>	<a href="#"><u>Data, Voice, and Video Cabling</u></a>
<input type="checkbox"/>	<a href="#"><u>Low Voltage Wiring Security/Fire Alarm Systems</u></a>
<input type="checkbox"/>	<a href="#"><u>NFPA 72 - National Fire Alarm Code</u></a>
<input type="checkbox"/>	<a href="#"><u>Carpentry and Building Construction</u></a>
<input type="checkbox"/>	<a href="#"><u>Mathematics for Plumbers and Pipefitters</u></a>
<input type="checkbox"/>	<a href="#"><u>Ugly's Electrical References</u></a>
<input type="checkbox"/>	<a href="#"><u>The Lineman's and Cableman's Handbook</u></a>
<input type="checkbox"/>	<a href="#"><u>Design and Control of Concrete Mixtures, 14th Edition</u></a>
<input type="checkbox"/>	<a href="#"><u>Diseño y Control de Mezclas de Concreto</u></a>
<input type="checkbox"/>	<a href="#"><u>Pipe &amp; Excavation Contracting</u></a>
<input type="checkbox"/>	<a href="#"><u>Modern Masonry - Brick, Block, Stone</u></a>
<input type="checkbox"/>	<a href="#"><u>Roofing Construction &amp; Estimating</u></a>
<input type="checkbox"/>	<a href="#"><u>Handbook of Rigging For Construction and Industrial Operations</u></a>
<input type="checkbox"/>	<a href="#"><u>Portland Cement Plaster/Stucco Manual</u></a>
<input type="checkbox"/>	<a href="#"><u>NFPA 17: Standard for Dry Chemical Extinguishing Systems .</u></a>
<input type="checkbox"/>	<a href="#"><u>NFPA 13: Installation of Sprinkler Systems</u></a>
<input type="checkbox"/>	<a href="#"><u>NFPA 25: Inspection, Testing and Maintenance of Water-Based Fire Protection Systems</u></a>

Continued on next page



<input type="checkbox"/>	NFPA 54: National Fuel Gas Code
<input type="checkbox"/>	<u>International Building Code</u>
<input type="checkbox"/>	<u>International Residential Code for One- and Two-Family Dwellings</u>

*Please note: Inventory and pricing subject to change without notice.*

- You may also place a checkmark next to the items that you would like to order, and mail or fax this form to PSI (be sure to include your contact information). A Customer Service Rep will call you to place the order.

Mail or FAX to:  
 PSI licensure:certification \*\* 3210 E Tropicana \* Las Vegas \* NV \* 89121 (Attn Shipping)  
 Fax (702) 932-2668

Name: \_\_\_\_\_

Address: \_\_\_\_\_

City \_\_\_\_\_ State \_\_\_\_\_ Zip \_\_\_\_\_

Phone Number: \_\_\_\_\_







# SPECIAL ARRANGEMENT REQUEST FORM OR OUT-OF-STATE TESTING REQUEST

All examination centers are equipped to provide access in accordance with the Americans with Disabilities Act (ADA) of 1990. Applicants with disabilities or those who would otherwise have difficulty taking the examination may request special examination arrangements.

Candidates who wish to request special arrangements because of a disability should fax this form and supporting documentation to PSI at (702) 932-2666.

### Requirements for special arrangement requests

You are required to submit documentation from the medical authority or learning institution that rendered a diagnosis. Verification must be submitted to PSI on the letterhead stationary of the authority or specialist and include the following:

- Description of the disability and limitations related to testing
- Recommended accommodation/modification
- Name, title and telephone number of the medical authority or specialist
- Original signature of the medical authority or specialist

Date \_\_\_\_\_

Legal Name: \_\_\_\_\_  
Last Name First Name

Address: \_\_\_\_\_  
Street City, State, Zip Code

Telephone : (\_\_\_\_) \_\_\_\_\_ - \_\_\_\_\_ (\_\_\_\_) \_\_\_\_\_ - \_\_\_\_\_  
Home Work

Email Address: \_\_\_\_\_

Check any special arrangements you require (requests must concur with documentation submitted):

- Reader (as accommodation for visual impairment)
- Extended Time (Additional time requested: \_\_\_\_\_)
- Reader (as accommodation for learning disability)
- Other \_\_\_\_\_
- Large-Print written examination \_\_\_\_\_
- Out-of-State Testing Request (this request does not require additional documentation)

Site requested: \_\_\_\_\_

Complete and fax this form, along with supporting documentation, to (702) 932-2666. You will be mailed, e-mailed or faxed an approval or denial letter within 10 business days.



PSI  
3210 E Tropicana  
Las Vegas, NV 89121

